

Professional Development Offerings

Winter / Spring 2012



**EDUCATION
CONNECTION**

www.educationconnection.org



How to Register:

Please register online at www.educationconnection.org and click on "Register for Courses."

Registration Deadline:

The registration deadline is two (2) weeks prior to the scheduled event.

Confirmation:

Your registration will be confirmed. A confirmation letter with directions will be mailed.

Participant Cancellation/Refund Policy:

Refunds to participants will be honored when EDUCATION CONNECTION is notified in writing two (2) weeks prior to the date of the workshop.

Inclement Weather:

Cancellations due to inclement weather are announced by calling the Litchfield office at 860-567-0863 and follow the prompt for class cancellations.

Questions:

Please contact Nancy Luchene at 860-567-0863 ext. 116.

EDUCATION CONNECTION School Services team members are professional development specialists who partner with schools to foster and support school reform. As education grows toward data-based decision making, differentiated instruction, and a variety of standards-based curriculum planning models, the professional development staff at **EDUCATION CONNECTION** is poised to work with you in assessment, strategy, implementation, and ongoing support.

Our work is customized to meet the needs of schools and districts. Please contact Jonathan Costa, Director of School and Program Services, for further information: costa@educationconnection.org

SERVICES

Ongoing Professional Development is provided through:

- Coaching & Modeling
- Consultation
- Facilitation
- Professional Development

SYSTEMS ORGANIZATION

- Assessment Training
- Curriculum Development
- Data Analysis
- Data-Driven Decision Making / Data Teams
- Effective Teaching Strategies
- Examining Student Work
- Holistic Accountability
- Instructional Coaching
- Leadership Training
- Making Standards Work
- School Improvement

LITERACY

- Conferring
- Early & Secondary Literacy
- Readers/Writers Workshop
- Reading & Writing Across the Disciplines
- Socratic Seminar

NUMERACY

- Development of Performance-Based Learning and Assessment in Mathematics
- Differentiation
- Problem Solving
- Strategies for Concept Development of Standards

TECHNOLOGY

- Bring Your Own Device
- Data Tools
- One-to-One Models
- Online Learning / Odysseyware®
- Open Source Technology
- Tech Integration

SCIENCE

- Embedded Task Training
- Science Curriculum Revision

21st CENTURY SKILLS

- Assessment and Measurement
- Continuous Improvement
- Cross-Content Integration
- Identification and Articulation



● Coherence and Focus in Strategic Planning

Date: By Arrangement Based on Rolling Enrollment*
Time: 9:00 a.m. to 3:00 p.m.
Location: 355 Goshen Rd., Litchfield OR
345 Main St., Danbury
Presenter: Jonathan Costa
Fee: \$99
CEUs: 0.5
Audience: K-12 Teachers, Administrators, Specialists,
Special Education Teachers, etc.

Failing to plan is a plan to fail. This workshop will show you how to do it right.

** Workshops with rolling enrollments will be scheduled once there is a minimum of eight (8) people signed up for the session.*

● Current Trends and Practices in Teacher Evaluation

Date: Wednesday, January 25, 2012
Time: 8:30 a.m. to 3:30 p.m. (Continental breakfast, lunch, and all materials included)
Location: 355 Goshen Rd., Litchfield
Presenter: Susan Palma and Staff
Fee: \$119
CEUs: 0.6
Audience: Building and District Administrators

The stakes have never been higher for the teacher evaluation process. The challenge of incorporating student performance and compensation considerations into current systems compounds an already complex task. This session will explore current thinking and best practice models and help participants build an understanding of teacher evaluation systems as a tool for instructional improvement and systemic change.

Topics explored will include:

- Integrating student performance data into teacher evaluation
- Policy implications for using student performance data to determine teacher compensation
- Multiple measures of evaluating teacher success
- Focusing evaluation policy on improving teaching practices
- Exploring best practice models from Connecticut and beyond

● Marketing and Communications Strategies for Schools/Districts

Date: TBD
Location: Your School/District
Presenter: Our Experienced Staff

If you can't get your message out, you don't have a message. This session will show you communication strategies to get your message to your constituents.

● Instructional Walkthroughs (CSDE Model)

Date: By Arrangement Based on Rolling Enrollment*
Time: 9:00 a.m. to 3:00 p.m.
Location: 355 Goshen Rd., Litchfield
Presenter: Staff
Fee: \$99
CEUs: 0.5
Audience: Building and District Administrators

Training in the official state Walkthrough model designed in conjunction with the new curriculum model template. This simple and direct model is easily adaptable to any content area or grade level.

** Workshops with rolling enrollments will be scheduled once there is a minimum of eight (8) people signed up for the session.*

● School Improvement Planning

Date: By Arrangement Based on Rolling Enrollment*
Time: 9:00 a.m. to 3:00 p.m.
Location: 355 Goshen Rd., Litchfield OR
345 Main St., Danbury
Presenter: Staff
Fee: \$99
CEUs: 0.5
Audience: K-12 Teachers, Administrators, Specialists,
Special Education Teachers, etc.

Facilitated data-based school improvement planning is a tried and true method for driving success.

** Workshops with rolling enrollments will be scheduled once there is a minimum of eight (8) people signed up for the session.*

● Sexual Harassment Prevention

Date: Friday, March 23, 2012
Time: 1:00 p.m. to 3:30 p.m.
Location: 355 Goshen Rd., Litchfield
Presenter: Jonathan Costa / Laurene Pesce
Fee: \$49
CEUs: 0.2
Audience: Building and District Administrators

Learn the basics of harassment prevention and effective handling and investigation of claims.

● Strategic Planning (District/Board)

Date: TBD
Location: Your School/District
Presenter: Jonathan Costa

Failing to plan is a plan to fail. We can facilitate your planning process from start to finish.



● Addressing Student Apathy

Date: Thursday, March 29, 2012
OR
Friday, April 13, 2012
Time: 8:30 a.m. to 3:30 p.m.
Location: 355 Goshen Rd., Litchfield
Presenter: Erin Bailey
Fee: \$99
CEUs: 0.6
Audience: Administrators, Curriculum Leaders,
Specialists, K-12 Teachers, etc.

A top concern in many schools remains the apathetic student. Strategies and ideas will be shared for ensuring the success of the apathetic student. A variety of personality types contribute to student apathy. Time will be spent understanding those personality types and developing skills for helping students meet academic and social success.

● Analyzing Student Work: Using Powerful Protocols

Date: Monday, March 26, 2012
OR
Monday, May 14, 2012
OR
Monday, June 4, 2012 (choose one date)
Time: 8:30 a.m. to 3:30 p.m.
Location: 355 Goshen Rd., Litchfield
Presenter: Susan Palma or Abbie Lareau
Fee: \$119
CEUs: 0.6
Audience: K-12 Teachers

How does analyzing student work strengthen teacher content knowledge and promote high-quality instruction? Explore the use of Looking at Student Work Protocols to analyze student work. Discover how these strategies make the most effective use of time while having in-depth, insightful conversations about teaching and learning.

● Curriculum Audits (CSDE Model)

Date: TBD
Location: Your School/District
Presenter: Our Experienced Staff

Using the official CSDE Curriculum Development Template, EDUCATION CONNECTION staff can audit your curriculum documents and make recommendations for improvement.

● Non-Certified Staff Training for Improving School Climate

This hour-long seminar will focus on the responsibility of all staff in ensuring student safety in all venues of the school day. The purpose is to comply with state legislation requiring all staff to receive training.

● Encouraging Responsible Citizenship Education

Date: Wednesday, February 22, 2012
Time: 9:00 a.m. to 3:00 p.m.
Location: 355 Goshen Rd., Litchfield
Presenter: Kristin Nauheimer
Fee: \$99
CEUs: 0.5
Audience: Administrators, Curriculum Leaders,
Specialists, K-12 Teachers, etc.

Civics and Citizenship Education is an important national priority. However, being an effective citizen comes with rights and responsibilities. This workshop helps define what it means to be a responsible citizen and outlines how educators can encourage their students to take an active role in their communities.

● It's Back! - Performance-Based Learning and Assessment

Date: Monday, May 21, 2012
Time: 8:30 a.m. to 3:30 p.m.
Location: 355 Goshen Rd., Litchfield
Presenter: Susan Palma
Fee: \$119
CEUs: 0.6
Audience: Administrators, Curriculum Leaders,
Specialists, K-12 Teachers, etc.

One of the authors of "A Teacher's Guide to Performance Based Learning and Assessment" will take you through the process of creating and embedding high quality performance tasks in learning. The process will include how to create tasks that align to cognitive strategies, common core standards, and improved work habits. This workshop will demonstrate how performance-based learning and assessment engages students in ownership of learning and self-assessment.

Curriculum Council

Dates: Tuesdays
January 10, 2012
February 14, 2012
March 13, 2012
May 15, 2012
Time: 8:30 a.m. to 10:30 a.m.
Location: Newtown Board of Education Offices on the
Fairfield Hills Campus
3 Primrose Street, Newtown
(across the street from the John Reed
Intermediate School)
Audience: District Level Curriculum Leaders



● Implementation of SRBI - State Department of Education Training

The purpose of this training is to help participants gain a practical understanding of the SRBI Framework and its implementation through reading, reflection, and interactive activities.

During this two-day training, participants will:

- Experience the implementation of SRBI
- Use assessment data to make decisions
- Understand how district, school, and instructional data teams relate to the SRBI Framework
- Learn successful SRBI implementation practices from local practitioners
- Understand the various factors that influence the successful implementation of SRBI

Dates: Tuesday, May 1 & Wednesday, May 2, 2012

Time: 8:30 a.m. to 3:30 p.m.

Location: EDUCATION CONNECTION, 355 Goshen Road, Litchfield

Presenter: Susan Palma

Fee: \$170.00 (waived for SDE partner and SDE supported districts)

CEUs: 1.2

Participants: Administrators, Curriculum Leaders, Specialists, K-12 Teachers, etc.

● Making the Leap from Instructional Data Teams to School Data Teams

Date: By Arrangement Based on Rolling Enrollment*

Time: 9:00 a.m. to 12:00 p.m.

Location: 355 Goshen Rd., Litchfield

Presenter: Erin Bailey

Fee: \$49

CEUs: 0.3

Audience: Administrators, Curriculum Leaders, Specialists, K-12 Teachers, etc.

So many teams are high functioning in terms of Instructional Data Teams. This workshop is geared toward making the leap to including a School Data team. Teams are asked to bring School Improvement Plan, Strategic School Profile, and Instructional Data Team minutes. The purpose will be to find time, resources and manage logistics of creating and maintaining a School Data team.

** Workshops with rolling enrollments will be scheduled once there is a minimum of eight (8) people signed up for the session.*

● Understanding Diversity

Date: Wednesday, February 15, 2012

Time: 9:00 a.m. to 12:00 p.m.

Location: 355 Goshen Rd., Litchfield

Presenter: Abby Peklo

Fee: \$49

CEUs: 0.3

Audience: K-12 Teachers

Unwrapping the subtle layers of prejudice and reflecting on personal bias will encourage educators to foster a broad understanding of cultural, ethnic, and gender identity differences within their classrooms.

● Painless Collaborative Learning

Date: Wednesday, May 9, 2012

Time: 9:00 a.m. to 3:00 p.m.

Location: 355 Goshen Rd., Litchfield

Presenter: Kristin Nauheimer

Fee: \$99

CEUs: 0.5

Audience: Administrators, Curriculum Leaders, Specialists, K-12 Teachers, etc.

Cooperative Learning has been proven to be extremely effective for all types of students because it promotes learning and fosters respect and friendships among diverse groups of students. Peers depend on each other for a wide variety of learning tasks. This workshop helps define painless ways to implement Collaborative Learning into the classroom so every learner succeeds.

● Practicing Positive Interactions for a Successful School Climate

Date: Wednesday, February 29, 2012

Time: 2:00 p.m. to 4:00 p.m.

Location: 355 Goshen Rd., Litchfield

Presenter: Abby Peklo

Fee: \$49

Audience: K-12 Paraprofessionals and Support Staff

Paraprofessionals and support staff are integral members of the school community. This workshop helps define how their roles and interactions with colleagues and students are important to creating and maintaining a positive atmosphere that supports their school's mission of academic achievement for all students.



● Responding to Meanness

Date: Tuesday, February 28, 2012
Time: 9:00 a.m. to 12:00 p.m.
Location: 355 Goshen Rd., Litchfield
Presenter: Abby Peklo
Fee: \$49
CEUs: 0.3
Audience: K-12 Teachers

Acts of meanness affect all students: the aggressor, the target, the observer and the reporter. This program defines the continuum of meanness, from teasing to violence. It shows teachers how to recognize signs of meanness, feel more comfortable responding to incidents and support those who are affected by it.

● Rethinking Data Teams

Date: Friday, May 18, 2012
Time: 9:00 a.m. to 12:00 p.m.
OR
1:00 p.m. to 4:00 p.m.
Location: 355 Goshen Rd., Litchfield
Presenter: Erin Bailey
Fee: \$49
CEUs: 0.3
Audience: Administrators, Curriculum Leaders, Specialists, K-12 Teachers, etc.

The focus of this session will be to revisit the purpose of data teams including minimizing paperwork, focusing on student work analysis and how to go about identifying and remediating the Problem of Practice.

● Teaming for Performance

Date: By Arrangement Based on Rolling Enrollment*
Time: 9:00 a.m. to 3:00 p.m.
Location: 355 Goshen Rd., Litchfield OR
345 Main St., Danbury
Presenter: Staff
Fee: \$99
CEUs: 0.5
Audience: K-12 Teachers, Administrators, Specialists, etc.

Many minds are better than one – when the team is working well. Make sure that it does with our team training and assistance.

** Workshops with rolling enrollments will be scheduled once there is a minimum of eight (8) people signed up for the session.*

● What We Need to Know About the New Bullying Legislation...Putting Law into Practice Effectively

Date: By Arrangement Based on Rolling Enrollment*
Time: 9:00 a.m. to 12:00 p.m.
Location: 355 Goshen Rd., Litchfield
Presenter: Staff
Fee: \$49
CEUs: 0.3
Audience: Administrators, Curriculum Leaders, Specialists, K-12 Teachers, etc.

By taking a step-by-step approach to ensuring compliance with the new legislation, teams will develop a plan of action to ensure compliance and student safety.

** Workshops with rolling enrollments will be scheduled once there is a minimum of eight (8) people signed up for the session.*



EDUCATION CONNECTION – Your Source for Online and Blended Learning Support

Did you know that EDUCATION CONNECTION...

- Is a recognized national leader in the creation and implementation of blended learning courses using Moodle and has successfully created courses for schools in Connecticut, Massachusetts, and for the New York City Public School system?
- Can host, support or help you create blended or distance learning courses using Moodle?
- Is the statewide license distributor for Odysseyware, one of the most flexible and powerful online learning course providers for grades 3-12? Many of your peers are using the unique concurrent Odysseyware license structure to save money and increase services.
- Is a site facilitator for the Virtual High School (credit enhancement) and Virtual Learning Academy (credit recovery)?

If you believe that online learning will be part of your district's future, EDUCATION CONNECTION has the resources, experience, and expertise to help make it happen! Call Jonathan Costa at 860.567.0863 ext. 115 to find out how we can help.

Math and Science Strategies

● Curriculum-Based Measurement (CBM) in Mathematics

Date: Thursday, March 29, 2012
Time: 1:00 p.m. to 3:00 p.m.
Location: 345 Main Street, Danbury
OR

Date: Friday, March 30, 2012
Time: 9:00 a.m. to 11:00 a.m.
Location: 355 Goshen Road, Litchfield
Presenter: Susan Palma
Fee: \$39

Audience: K-12 Teachers, Administrators, Specialists, etc.

CBM produces accurate, meaningful information about students' academic levels and growth. Scientific research supports the use of the progress monitoring tool, curriculum-based measurement. Learn about how CBM is used to track academic development and improve student achievement in mathematics.

● Improving Reading of Mathematics

Date: Friday, February 3, 2012
Time: 9:00 a.m. to 3:00 p.m.
Location: 355 Goshen Road, Litchfield
Presenter: Susan Palma
Fee: \$119

CEUs: 0.6 - Language Arts - Reading Comp. CEUs
Audience: Administrators, Curriculum Leaders, Specialists, K-8 Teachers, Math Coaches, etc.

Are your students struggling to comprehend the language and written materials of mathematics? Come investigate reading/language arts strategies that will improve your ability to teach students how to think about, process, and comprehend math language, problems, and text.

● Guided Math

Date: Monday, April 30, 2012
Time: 9:00 a.m. to 3:00 p.m.
Location: 355 Goshen Rd., Litchfield
Presenter: Susan Palma
Fee: \$99
CEUs: 0.5
Audience: K-8 Teachers, Math Coaches, Curriculum Directors, Administrators

Using the same structures from reading instruction offers students the opportunity to develop their math skills at increasingly challenging levels. Learn how to use the principals of guided reading to support numeracy, engage students, connect mathematics to real-world experiences and support each student's efforts at varying levels according to their needs.

● Mathematics Interventions

Date: Monday, January 30, 2012
Time: 9:00 a.m. to 2:30 p.m.
Location: 355 Goshen Rd., Litchfield
Presenter: Susan Palma
Fee: \$99
CEUs: 0.5
Audience: Administrators, Curriculum Leaders, Specialists, K-12 Teachers, etc.

Education interventions are designed to intervene on behalf of the student in ways that maximize student achievement. Participants will leave with evidence-based strategies that have demonstrated the ability to maximize student achievement in mathematics.

Language Arts Strategies

● Curriculum-Based Measurement (CBM) in Language Arts

Date: Thursday, March 29, 2012
Time: 9:00 a.m. to 11:00 a.m.
Location: 345 Main Street, Danbury
OR

Date: Friday, March 30, 2012
Time: 1:00 p.m. to 3:00 p.m.
Location: 355 Goshen Road, Litchfield
Presenter: Susan Palma
Fee: \$39

Audience: K-12 Teachers, Administrators, Specialists, etc.

CBM produces accurate, meaningful information about students' academic levels and growth. Scientific research supports the use of the progress monitoring tool, curriculum based measurement. Learn about how CBM is used to track academic development and improve student achievement in language arts.

English Language Arts Council

Date: Wednesday, April 25, 2012
Time: 1:00 p.m. to 3:00 p.m.
Location: EDUCATION CONNECTION
355 Goshen Rd., Litchfield

Math Council

Date: Friday, April 27, 2012
Time: 1:00 p.m. to 3:00 p.m.
Location: EDUCATION CONNECTION
355 Goshen Rd., Litchfield



● TEAM Initial Support Teacher (IST) Training

This three-day training is designed for teachers who have been selected by their districts to become TEAM mentors &/or cooperating teachers. Participants will develop knowledge and skills needed to support the induction of beginning teachers through the TEAM module process. Note: Participants must attend all three days of training to serve as a mentor or cooperating teacher. For more details and to register, contact your district facilitator.

Registration for Initial Support Teacher Training:

Participants can view available sessions at www.ctteam.org, but need to contact their district facilitator to register.

● TEAM Mentor Update Training

This one-day training is designed for teachers who were previously trained as mentors &/or cooperating teachers in the BEST Program. This training is required prior to being matched with a beginning teacher in the TEAM Program. Participants will integrate new knowledge of the TEAM program expectations with prior mentoring experience in order to support beginning teachers in the TEAM module process.

Registration for Mentor Update Training:

Participants will need to register at www.ctteam.org to attend one of these sessions.

● TEAM Mentor Support Sessions

This two-hour session is available to currently updated and matched mentors. Participants will gain new insights from a year of program implementation, preview new TEAM resources and see how they can be used to support a beginning teacher in the TEAM module process.

Registration for Mentor Support Sessions:

Participants will need to register at www.ctteam.org to attend one of these sessions. Registration information will be published in August at www.ctteam.org.

● TEAM Coordinating Committee (TCC) Support Sessions

This three-hour session is available to TCC members with teams of 2-4 recommended. Participants will receive updated program information and discuss strategies for using data from the first year of TEAM implementation to improve support for program participants.

Registration for TCC Support Sessions:

Participants will need to register at www.ctteam.org to attend one of these sessions. Registration information will be published in August at www.ctteam.org.

● TEAM Administrator Overview

This three-hour session is available to building administrators. Participants will understand TEAM expectations including their responsibility related to “signing off” on a beginning teacher’s Professional Growth Goal Action Plan (PGAP).

Registration for Administrator Overview: Participants will need to register at www.ctteam.org to attend one of these sessions. Registration information will be published in August at www.ctteam.org.

● TEAM Initial Reflection Paper Reviewer Training

This one-day training is designed for educators not previously trained to review TEAM reflection papers and is required training for all new reviewers. Participants will learn the criteria, process and expectations for reviewing TEAM reflection papers. For more details and to register, contact your district facilitator.

● TEAM Reflection Paper Reviewer Update Training

This three-hour training is designed for previously trained TEAM reflection paper reviewers and is required to remain active/continue to serve as a TEAM reviewer. Participants will recalibrate their expectations for successful module completion. For more details and to register, contact your district facilitator.

We also provide in-district support, services, and/or training for beginning teachers, mentors, administrators, district facilitators, and TEAM Coordinating Committees. Please contact Laura Patterson at patterson@educationconnection.org for details.





Supporting the beginning teacher – Beginning teachers should use the resources provided by the CSDE, their school/district, and local RESC to strengthen their knowledge of instructional strategies and students as learners as well as prepare for TEAM requirements.

The following are workshops that will be held in multiple two-hour increments.

The following workshops are designed to assist beginning teachers with their professional growth action plan.



● **Active Learning Module - The “Big Es of Instruction” - Effective, Explicit, Evidence-Based**

Location: Online only
Presenter: Susan Palma
Fee: \$25
CEUs: 0.5
Audience: K-12 Beginning Teachers

The purpose of this training is to assist beginning teachers with exploring in-depth the relevant instructional practices, so that teachers implement instruction that engages students in rigorous and relevant learning. The focus will be on evidence-based instructional strategies, explicit instruction, and effective differentiation practices. The objectives of this training are that the participants will be able to:

- Use student data to plan for the use of explicit, varied, and scaffolded instruction aligned to students’ needs
- Identify appropriate evidence-based instructional strategies that will enable students to apply thinking skills to new learning and content
- Address individual learning needs of all students through effective differentiation of instruction

● **Assessing for Learning Module - High Quality Assessment Practices**

Location: Online only
Presenter: Susan Palma
Fee: \$25
CEUs: 0.5
Audience: K-12 Beginning Teachers

Highly effective teachers use multiple measures to analyze student performance and to inform subsequent planning and instruction. This series of workshops will provide participants the opportunity to:

- Learn the value of, and how to use, formative and summative assessments
- Learn general guidelines for effective item writing
- Develop assessment items that are aligned to standards and expected learning outcomes
- Create scoring instruments to accompany assessments
- Analyze student work and adjust instruction to meet students’ needs

● **Environment, Engagement, and Commitment Module - All Things Classroom Climate and Management**

Location: Online only
Presenter: Susan Palma
Fee: \$25
CEUs: 0.5
Audience: K-12 Beginning Teachers

Creating a classroom climate that is considerate of ALL learners and respectful of the diversity, interests, and individuality of students promotes student engagement and a positive learning community. The purpose of this workshop is to support the beginning teacher to be able to:

- Establish and support a productive learning environment for all students
- Effectively manage routines and transitions
- Utilize strategies to help students monitor their own learning process/progress/engagement





● Autism Evaluations and Strategies

Date: By Arrangement Based on Rolling Enrollment*
Time: 9:00 a.m. to 3:00 p.m.
Location: 355 Goshen Rd., Litchfield OR
345 Main St., Danbury
Presenter: Staff
Fee: \$99
CEUs: 0.5
Audience: K-12 Teachers, Administrators, Specialists,
Special Education Teachers, etc.

Our staff can provide non-partisan evaluations for identification and intervention purposes.

** Workshops with rolling enrollments will be scheduled once there is a minimum of eight (8) people signed up for the session.*

● ELL Strategies for Non-ELL Teachers

Date: Thursday, March 29, 2012 OR
Wednesday, April 25, 2012
Time: 3:30 p.m. to 5:00 p.m.
Location: 355 Goshen Rd., Litchfield
Presenter: Staff
Fee: \$29
CEUs: 0.1
Audience: K-12 Teachers, Administrators, Specialists,
Special Education Teachers, etc.

This session will review the new resource flip-book from the RESC Alliance that has easily accessible strategies to assist teachers in working effectively with ELL students in a non-ELL classroom. Flip Book included in registration fee.

● It's Transition Time

Date: Wednesday, February 29, 2012
Time: 9:00 a.m. to 12:00 p.m.
Location: 355 Goshen Rd., Litchfield
Presenter: Jessica Anthony
Fee: FREE
CEUs: 0.3
Audience: K-12 Teachers, Administrators, Specialists,
Special Education Teachers, etc.

What does it really mean to transition from high school to the adult services world? This session will explore ways you can help your students navigate from the mandated services of IDEA and ADA. Software and resources available to help your district serve this population will be shared and explored.

● PMT Training

Date: By Arrangement Based on Rolling Enrollment*
Time: 9:00 a.m. to 3:00 p.m.
Location: 355 Goshen Rd., Litchfield OR
345 Main St., Danbury
Presenter: Staff
Fee: \$99
CEUs: 0.5
Audience: K-12 Teachers, Administrators, Specialists,
Special Education Teachers, etc.

Meet your legal requirements.

** Workshops with rolling enrollments will be scheduled once there is a minimum of eight (8) people signed up for the session.*

● Strategies for Difficult Classroom Behaviors

Date: By Arrangement Based on Rolling Enrollment*
Time: 9:00 a.m. to 3:00 p.m.
Location: 355 Goshen Rd., Litchfield OR
345 Main St., Danbury
Presenter: Staff
Fee: \$99
CEUs: 0.5
Audience: K-12 Teachers, Administrators, Specialists,
Special Education Teachers, etc.

Learn proven strategies for working with the most disruptive classroom behaviors.

** Workshops with rolling enrollments will be scheduled once there is a minimum of eight (8) people signed up for the session.*

● Strategies for Drivers and Support Personnel

Date: By Arrangement Based on Rolling Enrollment*
Time: 9:00 a.m. to 3:00 p.m.
Location: 355 Goshen Rd., Litchfield OR
345 Main St., Danbury
Presenter: Staff
Fee: \$99
Audience: Drivers and Support Personnel

We can provide your drivers with strategies and understanding of key behavioral challenges to reduce the number of incidents and improve the quality of the transportation experience.

** Workshops with rolling enrollments will be scheduled once there is a minimum of eight (8) people signed up for the session.*



● Winter/Spring 2012 Webinar Wednesdays

EDUCATION CONNECTION is offering free 60-minute webinars on the last Wednesday of the month from 3:00 p.m. to 4:00 p.m.

Date:	Topic:	Registration Link:
Wednesday, January 25, 2012	Flip the Classroom	https://www1.gotomeeting.com/register/423210041
Wednesday, February 29, 2012	Google Apps for Educators	https://www1.gotomeeting.com/register/562792217
Wednesday, March 28, 2012	Teaching Tobacco	https://www1.gotomeeting.com/register/526256433
Wednesday, April 25, 2012	Collaborative Learning	https://www1.gotomeeting.com/register/526798736
Wednesday, May 30, 2012	Positive Classroom Climate	https://www1.gotomeeting.com/register/690368768
Wednesday, June 27, 2012	60 in 60: Open Source Web 2.0 Tools	https://www1.gotomeeting.com/register/155754032

● Differentiated Instruction Strategies Flip Videos

Each video segment will introduce a strategy and/or mode of differentiation to ensure student success. In addition, participants will have access to a blogging opportunity to share ideas with other educators working on these strategies at various levels.

Available through the EDUCATION CONNECTION website beginning on April 1, 2012.

Flip Video Topic:
KUDs - Participants will learn how to “pull apart” a CCSS into components of what students must know, understand and be able to do to meet success with a given standard.
Tic-tac-toe - Participants will use the CCSS to create meaningful choice activities which attend to the floor and ceiling of a standard/standards of their choice.
RAFT - Participants will use the CCSS to create a choice RAFT (role, audience, format, topic/task). Choices will be geared toward reaching all levels of learners in the classroom.
Tiering - Participants will learn to create tiered lessons for the novice, apprentice and practitioner using the CCSS.
Grouping - Participants will learn various models for grouping students based on more than homogeneity or heterogeneity.
Interest inventories - Participants will discover the necessity of knowing our students. Ideas and strategies will be shared to “get to know” our students in depth and given a short time frame.



● Program/Curriculum Audit

Date: By Arrangement Based on Rolling Enrollment*
 Time: 9:00 a.m. to 3:00 p.m.
 Location: 355 Goshen Rd., Litchfield
 Presenter: Erin Bailey
 Fee: FREE
 CEUs: 0.5
 Audience: World Language Teachers and District Curriculum Leaders

We can review and audit your current world languages program and curriculum based on current best practices and ACTFL standards.

** Workshops with rolling enrollments will be scheduled once there is a minimum of eight (8) people signed up for the session.*

● Status of World Languages

Date: Tuesday, March 6, 2012
 Time: 1:00 p.m. to 3:00 p.m.
 Location: 355 Goshen Rd., Litchfield
 Presenter: Erin Bailey
 Fee: FREE
 CEUs: 0.2
 Audience: World Language Teachers and District Curriculum Leaders

This session will review the status of world language instruction in the state of Connecticut based on data collected in the fall of 2011.



● Administrator/Teaching Coaching

Date: TBD
Location: Your School/District
Presenter: Our Experienced Staff

Get some professional and unbiased feedback to help you improve any set of professional skills without any evaluative overtones.

● District/Building Problem Solving Interventions

Date: TBD
Location: Your School/District
Presenter: Our Experienced Staff

Use our professionals for unbiased technical assistance to help unravel and solve difficult building or district challenges.

● Effective Meeting Facilitation

Date: TBD
Location: Your School/District
Presenter: Abby Peklo

Meetings are expensive – ensure your investment with effective facilitation.

● Setting Up and Running PLC Teams

Date: TBD
Location: Your School/District
Presenter: Our Experienced Staff

Collaboration among professionals can drive change and improvement. We can help you set up these frameworks.

● Sexual Harassment Prevention Training

Date: TBD
Location: Your School/District
Presenter: Abby Peklo

Meet your legal requirements and educate your staff at the same time.

● Skill or Topic-Specific Targeted Sessions

Date: TBD
Location: Your School/District
Presenter: Our Experienced Staff

Instruction/Engagement/Assessment.

● Support for School Redesign/Turn-Around

Date: TBD
Location: Your School/District
Presenter: Our Experienced Staff

From mission to goals to strategies, our staff can help put you on the road to continuous improvement.



355 Goshen Road • P.O. Box 909 • Litchfield, CT 06759-0909

Phone 860-567-0863 • Fax 860-567-3381

345 Main Street • Danbury, CT 06810

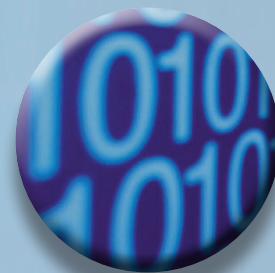
Phone 203-791-1904 • Fax 203-778-8076

www.educationconnection.org

Winter / Spring 2012

Digital Learning & 21st Century Skills

*Professional Development
Offerings*



**EDUCATION
CONNECTION**

www.educationconnection.org

355 Goshen Road • P.O. Box 909
Litchfield, CT 06759-0909
Phone 860-567-0863 • Fax 860-567-3381

345 Main Street • Danbury, CT 06810
Phone 203-791-1904 • Fax 203-778-8076

■ A 21st Century Approach to Teaching Business

Date: By Arrangement Based on Rolling Enrollment*
Time: 9:00 a.m. to 3:00 p.m.
Location: 355 Goshen Rd., Litchfield
Presenter: Jennifer Silverman
Fee: \$99
CEUs: 0.5
Audience: K-12 Teachers, Administrators, Specialists, etc.

See how a fully integrated 21st century skills model works in the presentation of business content.

■ A 21st Century Approach to Teaching Mathematics

Date: By Arrangement Based on Rolling Enrollment*
Time: 9:00 a.m. to 3:00 p.m.
Location: 355 Goshen Rd., Litchfield
Presenter: Jennifer Silverman
Fee: \$99
CEUs: 0.5
Audience: K-12 Teachers, Administrators, Specialists, etc.

See how a fully integrated 21st century skills model works in the presentation of math content, with specific focus on algebra.

■ A 21st Century Approach to Teaching Science

Date: By Arrangement Based on Rolling Enrollment*
Time: 9:00 a.m. to 3:00 p.m.
Location: 355 Goshen Rd., Litchfield
Presenter: Kerry MacFarland
Fee: \$99
CEUs: 0.5
Audience: K-12 Teachers, Administrators, Specialists, etc.

See how a fully integrated 21st century skills model works in the presentation of science content.

■ Challenge-Based Learning

Date: By Arrangement Based on Rolling Enrollment*
Time: 9:00 a.m. to 3:00 p.m.
Location: 355 Goshen Rd., Litchfield
Presenter: Jane Donn
Fee: \$99
CEUs: 0.5
Audience: K-12 Teachers, Administrators, Specialists, etc.

Challenge-based learning begins with a big idea which is developed into: an essential question, a challenge, guiding questions, activities, resources, determining and articulating the solution, taking action by implementing the solution, reflection, assessment, and publishing. Learn to design exciting and engaging challenge-based projects in your curriculum.

■ Cyber Safety and Internet Bullying

Date: Monday, March 26, 2012
Time: 9:00 a.m. to 12:00 p.m.
Location: 355 Goshen Rd., Litchfield
Presenter: Abby Peklo
Fee: \$49
CEUs: 0.3
Audience: K-12 Teachers, Paraprofessionals, and Support Staff

Students as young as elementary age are at risk for Internet bullying and cyber danger. This cyber safety awareness and Internet bullying prevention workshop introduces the dangers of inappropriate online communications. Cyber bullying often occurs among peer groups, friends, and school mates, and can be just as damaging as in-person meanness or bullying. Teachers and paraprofessionals can benefit from learning how to be a resource to their students and recognize signs of cyber trouble.

■ Design and Development of 21st Century Blended Learning Curricula

Date: By Arrangement Based on Rolling Enrollment*
Time: 9:00 a.m. to 3:00 p.m.
Location: 355 Goshen Rd., Litchfield
Presenter: Justine LaSala
Fee: \$99
CEUs: 0.5
Audience: K-12 Teachers, Administrators, Specialists, etc.

Learn how to design curricula which leverages technology to enhance educational experiences for students.



EDUCATION CONNECTION – Your Source for Online and Blended Learning Support

Did you know that EDUCATION CONNECTION...

- Is a recognized national leader in the creation and implementation of blended learning courses using Moodle and has successfully created courses for schools in Connecticut, Massachusetts, and for the New York City Public School system?
- Can host, support or help you create blended or distance learning courses using Moodle?
- Is the statewide license distributor for Odysseyware, one of the most flexible and powerful online learning course providers for grades 3-12? Many of your peers are using the unique concurrent Odysseyware license structure to save money and increase services.
- Is a site facilitator for the Virtual High School (credit enhancement) and Virtual Learning Academy (credit recovery)?

If you believe that online learning will be part of your district's future, EDUCATION CONNECTION has the resources, experience, and expertise to help make it happen! Call Jonathan Costa at 860.567.0863 ext.115 to find out how we can help.

* Workshops with rolling enrollments will be scheduled once there is a minimum of eight (8) people signed up for the session.

■ Digital Learning for All, Now

Date: Friday, March 30, 2012
Time: 9:00 a.m. to 3:00 p.m.
Location: 355 Goshen Rd., Litchfield
Presenter: Jonathan Costa
Fee: \$119 (includes a copy of the book)
\$89 (for those who already own the book)
CEUs: 0.5
Audience: 3-12 Teachers, Administrators and Instructional Leaders

Digital Learning for All, Now is a comprehensive strategy outline for making an affordable transition to a truly digital school district. This session will focus on the key implementation points laid out in the book, published by Corwin-Press and written by the presenter, and give participants an opportunity to network and discuss the strategies promoted by the author. Participants will also get access to the companion web page and its associated resources.

■ Educational Online Communication

Date: Thursday, April 5, 2012
Time: 9:00 a.m. to 3:00 p.m.
Location: 355 Goshen Rd., Litchfield
Presenter: Kristin Nauheimer
Fee: \$99
CEUs: 0.5
Audience: K-12 Teachers, Administrators, Specialists, etc.

Using the internet in the classroom has brought education to a new level. Various tools that are available online help break down the barriers of the classroom walls and overcome the distance that frequently restricts learners from global communication. This workshop helps define the importance of using Skype, blogs, message boards, etc. in a classroom setting and demonstrates uses and techniques which will stimulate students and improve academic achievement.

■ Implementing Online Open Source Technologies as Instructional Tools

Date: By Arrangement Based on Rolling Enrollment*
Time: 9:00 a.m. to 3:00 p.m.
Location: 355 Goshen Rd., Litchfield
Presenter: Frank LaBanca, Ed.D.
Fee: \$99
CEUs: 0.5
Audience: K-12 Teachers, Administrators, Specialists, etc.

Learn how the "latest and greatest" Web 2.0 tools can be used to create high quality student work.

■ Interactive White Board 2.0

Date: Thursday, April 26, 2012
Time: 9:00 a.m. to 3:00 p.m.
Location: 355 Goshen Rd., Litchfield
Presenter: Kali Rohr
Fee: \$99
CEUs: 0.5
Audience: K-12 Teachers

Learn how to take your interactive whiteboard to the next level during this hands-on, collaborative workshop! Find out trick and tips to save you time and energy while increasing student achievement. Come prepared with traditional lessons and ideas and we will turn them into exciting, interactive, engaging lessons you can begin using on your IWB in your classroom immediately.

■ Intermediate SMART Notebook

Date: Wednesday, January 25, 2012
Time: 9:00 a.m. to 3:00 p.m.
Location: 355 Goshen Rd., Litchfield
Presenter: Kali Rohr
Fee: \$99
CEUs: 0.5
Audience: K-12 Teachers

Take your SMART Board skills to the next level. This class is for SMART Board users with some experience who want to expand their use of the SMART Board in the classroom and increase the rigor of their SMART Board lessons. Use the SMART Notebook application to design and develop digital-age learning experiences and assessments. Participants should bring curriculum and/or State Standards for one content area.

■ Print Textbook Replacement Seminars

Date: Week of July 9, 2012 (US and World History, American Literature)
Week of July 30, 2012 (Biology and Algebra)
Time: 9:00 a.m. to 3:00 p.m.
Location: 355 Goshen Rd., Litchfield
Facilitators: Jonathan Costa and Kali Rohr
Fee: \$49
CEUs: 2.5
Audience: Any appropriate content area teacher or administrator

Participants will gather in content-alike groups to harvest digital resources for the purpose of creating Moodle-based digital alternatives to print textbooks. Any district/school sending a representative will receive a Moodle account and will have access to the generated resources in the following school year. Fee covers CEUs, snacks (bring brown bag lunch, please), and Moodle server membership.

* Workshops with rolling enrollments will be scheduled once there is a minimum of eight (8) people signed up for the session.

■ The 21st Century Administrator's Toolbag

Date: By Arrangement Based on Rolling Enrollment*
Time: 9:00 a.m. to 3:00 p.m.
Location: 355 Goshen Rd., Litchfield
Presenter: Frank LaBanca, Ed.D.
Fee: \$129
CEUs: 0.6
Audience: Building and District Administrators

As an administrator, are you looking for tools to help improve the quality of instruction in your building? Join us to discuss strategies, methods, and practices to increase 21st Century teaching and learning.

■ 21st Century Evaluation of Curriculum

Date: By Arrangement Based on Rolling Enrollment*
3 consecutive days
Time: 9:00 a.m. to 3:00 p.m.
Location: 355 Goshen Rd., Litchfield
Presenter: Frank LaBanca, Ed.D.
Fee: \$360
CEUs: 1.8
Audience: K-12 Teachers, Administrators, Specialists, etc.

Does your curriculum reflect a focus on 21st century skills? Are you looking for strategies to improve the design of your programs? Bring your curriculum documents and learn to evaluate them properly so you can make decisions to improve curriculum, instruction, and student achievement.

Technology Council

Dates: Monday, January 30, 2012
Tuesday, February 28, 2012
Tuesday, May 8, 2012

Time: 8:30 a.m. to 10:30 a.m.

Location: EDUCATION CONNECTION
355 Goshen Rd., Litchfield

Audience: District Level and Technology Leaders

■ Using MOODLE to Manage Online Learning

Date: By Arrangement Based on Rolling Enrollment*
Time: 9:00 a.m. to 3:00 p.m.
Location: 355 Goshen Rd., Litchfield OR
345 Main St., Danbury
Presenter: Emily Wasley
Fee: \$99
CEUs: 0.5
Audience: 7-12 Curriculum and Instructional Leaders and Teachers

Nobody has more experience in Connecticut using MOODLE to support teaching and learning than we do!

** Workshops with rolling enrollments will be scheduled once there is a minimum of eight (8) people signed up for the session.*

■ Virtual Learning Environments 101

Date: Thursday, May 24, 2012
Time: 9:00 a.m. to 3:00 p.m.
Location: 355 Goshen Rd., Litchfield
Presenter: Kali Rohr & Lauren Contorno
Fee: \$99
CEUs: 0.5
Audience: K-12 Teachers

Get all the facts about online, blended and distance learning including Moodle, Odysseyware and Virtual High School. Discover how these platforms benefit regular education, special education, and credit recovery students.

■ Virtual Worlds as an Instructional Tool

Date: By Arrangement Based on Rolling Enrollment*
Time: 9:00 a.m. to 3:00 p.m.
Location: 355 Goshen Rd., Litchfield OR
345 Main St., Danbury
Presenter: Matthew Worwood
Fee: \$99
CEUs: 0.5
Audience: 7-12 Curriculum and Instructional Leaders and Teachers

Interested in teaching a concept or course in a virtual world? Come to our "digital island space" to learn how.

■ Web 2.0 Tools

Date: Thursday, February 9, 2012
Time: 9:00 a.m. to 3:00 p.m.
Location: 355 Goshen Rd., Litchfield
Presenter: Kali Rohr
Fee: \$99
CEUs: 0.5
Audience: K-12 Teachers

Get your head in the cloud! Learn about the latest and greatest web 2.0 tools that increase student achievement and engagement.

■ Wikis, Blogs, and Social Networking—Using Social Networking to Support Learning in Your Classroom

Date: By Arrangement Based on Rolling Enrollment*
Time: 9:00 a.m. to 3:00 p.m.
Location: 355 Goshen Rd., Litchfield OR
345 Main St., Danbury
Presenter: Staff
Fee: \$99
CEUs: 0.5
Audience: 7-12 Curriculum and Instructional Leaders and Teachers

Just about every kid is using these tools; we might as well have them learn something while they do.

EDUCATION CONNECTION does not discriminate in any of its programs, activities or employment practices on the basis of race, color, age, national origin, ancestry, sex, religion, disability, veteran, marital or familial status. To file a complaint of discrimination write USDA Director, Office of Civil Rights, Washington, DC 20250-9410.

Implementing Common Core State Standards

Winter / Spring 2012

*Professional Development
Opportunities*



**EDUCATION
CONNECTION**

www.educationconnection.org

355 Goshen Road • P.O. Box 909
Litchfield, CT 06759-0909
Phone 860-567-0863 • Fax 860-567-3381

345 Main Street • Danbury, CT 06810
Phone 203-791-1904 • Fax 203-778-8076

◆ CCSS and 21st Century Skills, Understanding the “New” Standards

Date: By Arrangement Based on Rolling Enrollment*
Time: 9:00 a.m. to 3:00 p.m.
Location: 355 Goshen Rd., Litchfield OR
345 Main St., Danbury
Presenter: Erin Bailey
Fee: \$99
CEUs: 0.5
Audience: Administrators, Curriculum Leaders,
Specialists, K-12 Teachers, etc.

What do I need to teach? When? How do I read these new standards? Participants will develop an understanding of the “new” standards, as well as navigate resources to access units and lesson plans for help in implementing the CCSS.

** Workshops with rolling enrollments will be scheduled once there is a minimum of eight (8) people signed up for the session.*

◆ Curriculum Revision for Implementing the CCSS

Date: By Arrangement Based on Rolling Enrollment*
Time: 9:00 a.m. to 3:00 p.m.
Location: 355 Goshen Rd., Litchfield OR
345 Main St., Danbury
Presenter: Erin Bailey
Fee: \$99
CEUs: 0.5
Audience: Administrators, Curriculum Leaders,
Specialists, K-12 Teachers, etc.

The purpose of this workshop is using the CCSS to develop rigorous curricula. Participants should bring current curriculum documents. Time will be devoted to understanding the components necessary for student success with the CCSS.

** Workshops with rolling enrollments will be scheduled once there is a minimum of eight (8) people signed up for the session.*



State Department of Education CALI Training Modules

◆ Getting Ready for the Next Generation of Assessments

Date: Monday, April 2, 2012 and
Monday, April 23, 2012
Time: 8:30 a.m. to 3:30 p.m.
Location: 355 Goshen Rd., Litchfield
Presenter: Susan Palma or Abbie Lareau
Fee: \$199 (waived for partner districts)
CEUs: 1.2
Audience: Administrators, Curriculum Leaders,
Specialists, K-12 Teachers, etc.

District teams will develop a plan for a district-wide balanced assessment system aligned to the CT State Standards (CCSS) and the assessment principles underpinning the work of the Smarter Balanced Assessment Consortium, next generation of assessments, for many states including CT. Teams will also explore the formative assessment process and tools to assist teachers in the development of a variety of student assessments.

◆ Differentiated Instruction

Date: Thursday, May 10, 2012 and
Thursday, May 24, 2012
Time: 8:30 a.m. to 3:30 p.m.
Location: 355 Goshen Rd., Litchfield
Presenter: Erin Bailey/Susan Palma
Fee: \$170 (waived for partner districts)
CEUs: 1.2
Audience: Teams of Teachers, School and District
Leaders

Differentiated Instruction to Implement the Common Core Standards

- Learn about the ten components of curriculum and instruction as they relate to differentiation
- Explore principles of the differentiated classroom
- Develop an understanding of how teachers can increase the match between the curriculum and critical student learning differences including, prior knowledge, readiness to learn, and learning rate
- Develop a tiered lesson based upon the Common Core State Standards

To register for any of these professional development offerings, please visit www.educationconnection.org and click on “Register for Courses.”

◆ Strategies for Implementing the CCSS and 21st Century Skills using Differentiated Instruction in the Content Areas:

Social Studies, Science, Health, Technical Subjects and World Languages for the Elementary, Middle and High School Classroom

Date: Thursday, February 2, 2012 OR
Monday, April 2, 2012
Time: 8:30 a.m. to 3:30 p.m.
Location: 355 Goshen Rd., Litchfield
Presenter: Erin Bailey
Fee: \$99
CEUs: 0.6
Audience: Administrators, Curriculum Leaders,
Specialists, K-12 Teachers, etc.

In an ever diverse classroom, educators must be willing and able to differentiate for a variety of ability levels daily. The purpose of this session will be to develop practical strategies for managing differentiation through thoughtful planning.

◆ The Transition Begins - Building a Plan to Integrate the Common Core State Standards

Date: Wednesday, June 20, 2012
Time: 9:00 a.m. to 2:30 p.m.
Location: 345 Main St., Danbury
Presenter: Susan Palma
Fee: \$119
CEUs: 0.5
Audience: Administrators, Curriculum Leaders,
Specialists, K-12 Teachers, etc.

What are your plans for implementation? Learn more about the Common Core Standards and develop an action plan for implementing the standards in your class or district. Participate in activities to develop an understanding of the learning progression in the Standards and their implications on curriculum and instruction. Spend time evaluating your current capacity to implement the Standards and identify necessary next steps to facilitate implementation.

◆ World Languages and the CCSS

Date: By Arrangement Based on Rolling Enrollment*
Time: 9:00 a.m. to 3:00 p.m.
Location: 355 Goshen Rd., Litchfield OR
345 Main St., Danbury
Presenter: Erin Bailey
Fee: \$99
CEUs: 0.5
Audience: Administrators, Curriculum Leaders,
Specialists, K-12 Teachers, etc.

What is a World Language teacher to do? How does the CCSS impact teachers of World Language? Ideas for using the CCSS ELA Standards to ensure student success in the study of World Language will be shared and practiced.

* Workshops with rolling enrollments will be scheduled once there is a minimum of eight (8) people signed up for the session.



To register for any of these professional development offerings, please visit www.educationconnection.org and click on "Register for Courses."

EDUCATION CONNECTION School Services team members are professional development specialists who partner with schools to foster and support school reform. As education grows toward data-based decision making, differentiated instruction, and a variety of standards-based curriculum planning models, the professional development staff at **EDUCATION CONNECTION** is poised to work with you in assessment, strategy, implementation, and ongoing support.

Our work is customized to meet the needs of schools and districts. Please contact Jonathan Costa, Director of School and Program Services, for further information: costa@educationconnection.org

SERVICES

Ongoing Professional Development is provided through:

- Coaching & Modeling
- Consultation
- Facilitation
- Professional Development

SYSTEMS ORGANIZATION

- Assessment Training
- Curriculum Development
- Data Analysis
- Data-Driven Decision Making / Data Teams
- Effective Teaching Strategies
- Examining Student Work
- Holistic Accountability
- Instructional Coaching
- Leadership Training
- Making Standards Work
- School Improvement

LITERACY

- Conferring
- Early & Secondary Literacy
- Readers/Writers Workshop
- Reading & Writing Across the Disciplines
- Socratic Seminar

NUMERACY

- Development of Performance-Based Learning and Assessment in Mathematics
- Differentiation
- Problem Solving
- Strategies for Concept Development of Standards

TECHNOLOGY

- Bring Your Own Device
- Data Tools
- One-to-One Models
- Online Learning / Odysseyware®
- Open Source Technology
- Tech Integration

SCIENCE

- Embedded Task Training
- Science Curriculum Revision

21st CENTURY SKILLS

- Assessment and Measurement
- Continuous Improvement
- Cross-Content Integration
- Identification and Articulation

To register for any of these professional development offerings, please visit www.educationconnection.org and click on “Register for Courses.”