

EDUCATION CONNECTION

MEMBER DISTRICT CALENDAR

2011-2012



EDUCATION
CONNECTION

www.educationconnection.org



Program Contacts

CENTRAL ADMINISTRATION:

Executive Director	Danuta Thibodeau, Ph.D.	thibodeau@educationconnection.org	860-567-0863 x112
Director of School/Program Services	Jonathan P. Costa, Sr.	costa@educationconnection.org	860-567-0863 x115
Director of Finance and Operations	Jay Hubelbank	hubelbank@educationconnection.org	860-567-0863 x122
Administrative Assistant	Carol Montory	montory@educationconnection.org	860-567-0863 x114
Administrative Assistant	Joyce DeAngelo	deangelo@educationconnection.org	860-567-0863 x130

PROGRAMS & SERVICES CONTACTS:

Adult Education	Tony Sebastiano	tonys@educationconnection.org	860-567-0863 x132
Center for 21st Century Skills	Frank LaBanca, Ed.D.	labanca@educationconnection.org	860-567-0863 x142
Community Services	JodiLynn Binkley	binkley@educationconnection.org	860-567-0863 x184
Early Childhood Services	Juleen Flanigan	flanigan@educationconnection.org	860-567-0863 x177
Facilities/Fingerprinting	Jay Hubelbank	hubelbank@educationconnection.org	860-567-0863 x122
Fiscal Services	Jay Hubelbank	hubelbank@educationconnection.org	860-567-0863 x122
Food Services	Michael Allen	allen@educationconnection.org	860-567-0863 x148
Head Start/Early Head Start	Kathi Bleacher	bleacher@educationconnection.org	860-567-0863 x125
Human Resources	Laurene Pesce	pesce@educationconnection.org	860-567-0863 x111
Instructional Technology	Jonathan P. Costa, Sr.	costa@educationconnection.org	860-567-0863 x115
Interdistrict Grants/Development	Abby Peklo	peklo@educationconnection.org	860-567-0863 x166
Marketing & Communications	Janet M. Sebastiano	sebastianoj@educationconnection.org	860-567-0863 x194
School Age Programs	Tracey Lay	lay@educationconnection.org	860-567-0863 x143
School-to-Career	Jane Donn	donn@educationconnection.org	860-567-0863 x138
School Services	Jonathan P. Costa, Sr.	costa@educationconnection.org	860-567-0863 x115
Special Education	Mark Kostin	kostin@educationconnection.org	203-791-1904
Technology Services	Lynn Barton	bartonl@educationconnection.org	860-567-0863 x156
Transportation	Bert Hughes	hughes@educationconnection.org	860-567-0863 x131

AUGUST 2011

Monday	Tuesday	Wednesday	Thursday	Friday
1	2	3	4	5
8	9	10	11	12
15	16	17	18	19
<p>22</p> <p><u>New Teacher Orientation:</u></p> <ul style="list-style-type: none"> •Watertown <p><u>Professional Development:</u></p> <ul style="list-style-type: none"> •Plymouth 	<p>23</p> <p><u>New Teacher Orientation:</u></p> <ul style="list-style-type: none"> •Brookfield •Torrington <p><u>Professional Development:</u></p> <ul style="list-style-type: none"> •Plymouth •Watertown <p><u>Teacher Work Day:</u></p> <ul style="list-style-type: none"> •New Milford 	<p>24</p> <p><u>New Staff Orientation:</u></p> <ul style="list-style-type: none"> •Bethel •Torrington <p><u>Professional Development:</u></p> <ul style="list-style-type: none"> •New Milford •Plymouth •Watertown <p><u>Teacher Work Day:</u></p> <ul style="list-style-type: none"> •Brookfield •Canaan •Cornwall •Kent •North Canaan •Region 1 •Salisbury •Sharon 	<p>25</p> <p><u>School Begins:</u></p> <ul style="list-style-type: none"> •Plymouth <p><u>Staff Orientation:</u></p> <ul style="list-style-type: none"> •Bethel •Region 6 •Danbury •Torrington <p><u>PD/Teacher Work Day/Staff Report:</u></p> <ul style="list-style-type: none"> •ACCESS/GFLC •Canaan •Kent •Newtown •Region 1 •Salisbury •Watertown •Brookfield •Cornwall •New Milford •North Canaan •Region 15 •Sharon 	<p>26</p> <p><u>New Staff Orientation:</u></p> <ul style="list-style-type: none"> •Bethel •New Fairfield •The Gilbert School •Danbury •Sherman •Thomaston <p><u>Staff Convocation:</u></p> <ul style="list-style-type: none"> •New Milford •Watertown <p><u>Professional Development:</u></p> <ul style="list-style-type: none"> •ACCESS/GFLC •Litchfield •Region 15 •Brookfield •Region 6 •Torrington
<p>29</p> <p><u>School Begins:</u></p> <ul style="list-style-type: none"> •Brookfield •Cornwall •New Milford •Region 1 •Sharon •Canaan •Kent •North Canaan •Salisbury •Watertown <p><u>New Student Orientation:</u></p> <ul style="list-style-type: none"> •Torrington (High School) <p><u>New Staff Orientation:</u></p> <ul style="list-style-type: none"> •New Fairfield •Region 14 <p><u>PD/Teacher Work Day/Staff Report:</u></p> <ul style="list-style-type: none"> •ACCESS/GFLC •Bethel •Danbury •Norfolk •Region 7 •Region 15 •The Gilbert School •Torrington •Barkhamsted •Colebrook •Litchfield •Region 6 •Region 12 •Sherman •Thomaston •Winchester <p><u>Staff Report:</u></p> <ul style="list-style-type: none"> •New Fairfield <p><u>Student Orientation:</u></p> <ul style="list-style-type: none"> •Torrington (6th grade) 	<p>30</p> <p><u>School Begins:</u></p> <ul style="list-style-type: none"> •ACCESS/GFLC •Bethel •Newtown •Region 15 •Barkhamsted •Colebrook •Region 7 <p><u>Early Dismissal:</u></p> <ul style="list-style-type: none"> •New Milford <p><u>Professional Development:</u></p> <ul style="list-style-type: none"> •Danbury •Norfolk •Region 12 •Sherman •Thomaston •Winchester •Litchfield •Region 6 •Region 14 •The Gilbert School •Torrington <p><u>Staff Report:</u></p> <ul style="list-style-type: none"> •New Fairfield <p><u>Student Orientation:</u></p> <ul style="list-style-type: none"> •Torrington (6th grade) 	<p>31</p> <p><u>School Begins:</u></p> <ul style="list-style-type: none"> •Litchfield •Redding •Region 12 •The Gilbert School •Winchester •Norfolk •Region 6 •Sherman •Torrington <p><u>Professional Development:</u></p> <ul style="list-style-type: none"> •New Fairfield •Region 14 <p><u>Staff Report:</u></p> <ul style="list-style-type: none"> •Danbury •Thomaston 		

ADULT and CONTINUING EDUCATION

Foothills Adult & Continuing Education is a consortium of 17 school districts providing free mandated programs and fee-for-service enrichment classes for their schools and communities in a cost-effective, quality environment.

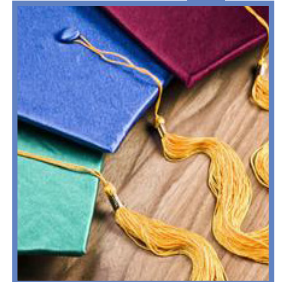
FREE Mandated Classes Help Adults Further their Education:

- GED (General Educational Development)
- ABE (Adult Basic Education)
- HSD (High School Diploma Program)
- NEDP (National External Diploma Program)
- Pre-GED (General Educational Development)
- ESL (English As A Second Language)
- Citizenship Classes
- Online Learning

New Program Improvement Grant Opportunities in the Areas of:

- Career Pathways
- Civics
- Family Literacy
- National External Diploma Program
- Non-Traditional Adult Education Instruction and Services
- Transition-to-College
- Workplace Education

In addition to the required State mandated programs offered at these sites, Foothills offers over 400 enrichment classes each semester. These classes cover a wide range of topic areas, including: Computer Training, Arts & Crafts, Health, Finance, Foreign Languages, Cooking, Self-Improvement and Recreation & Leisure. Certification courses are offered for Certified Nurses' Aide, Reiki, and Food Handlers. Certificate classes are offered in EKG, CPR/First Aid, and CT DEP Basic Boating/Personal Watercraft Safety. Courses are marketed in a 52-page brochure, mailed in August and January to over 76,000 homes.



SEPTEMBER 2011

Monday	Tuesday	Wednesday	Thursday	Friday
			<p>1</p> <p><u>School Begins:</u></p> <ul style="list-style-type: none"> •Danbury •Region 14 •New Fairfield •Thomaston <p>EDUCATION CONNECTION Board of Directors Meeting</p>	<p>2</p> <p><u>School Closed:</u></p> <ul style="list-style-type: none"> •Canaan •Kent •Region 1 •Sharon •Cornwall •North Canaan •Salisbury
<p>5</p> <p><u>LABOR DAY</u> All Schools, Danbury School Offices, & EDUCATION CONNECTION Closed</p>	6	7	<p>8</p> <p><u>Parents Night - Early Dismissal:</u> •Torrington (Middle)</p>	<p>9</p> <p>LCSA Luncheon</p>
12	13	<p>14</p> <p><u>Professional Development - Delayed Opening:</u> •Region 14 (NHS)</p> <p><u>Early Dismissal:</u> •ACCESS/GFLC</p>	<p>15</p> <p><u>Parents Night - Early Dismissal:</u> •Torrington (High)</p>	<p>16</p> <p><u>Professional Development - Delayed Opening:</u> •Bethel (BHS)</p> <p><u>Professional Development - Early Dismissal:</u> •Region 6</p> <p>WCSA Luncheon</p>
19	20	<p>21</p> <p><u>Professional Development - Delayed Opening:</u> •Region 14 (NHS)</p>	<p>22</p> <p><u>Curriculum Night - Early Dismissal:</u> •Torrington (Elementary)</p>	23
26	<p>27</p> <p><u>Professional Development - Early Dismissal:</u> •Danbury</p>	<p>28</p> <p><u>PD - Delayed Opening:</u> •Region 14 (NHS)</p> <p><u>PD - Early Dismissal:</u> •New Milford (Elementary) •Winchester</p> <p><u>Early Dismissal:</u> •ACCESS/GFLC •The Gilbert School</p>	<p>29</p> <p><u>ROSH HASHANAH - Schools Closed:</u></p> <ul style="list-style-type: none"> •Bethel •Danbury (& School Offices) •New Fairfield •Newtown •Region 15 •Brookfield •New Milford •Redding •Sherman 	30

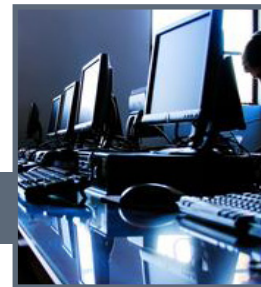
CENTER FOR 21ST CENTURY SKILLS

The Center for 21st Century Skills at EDUCATION CONNECTION is comprised of an innovative team of educators that recognize the need for creativity and technical expertise in our fast-paced global society. Our vision is for innovation in education through the integration of 21st century skills into the teaching and learning process. The Center utilizes cutting-edge technologies to orchestrate a creative learning environment that simulates relevance to the 21st century global workforce. The Center seeks to contribute to a common course of action in addressing rising academic and student expectations, and the demands for a more globally competitive workplace. The Center for 21st Century Skills can provide the tools, resources, practices, and evidence needed to meet 21st century challenges. We work with national, state, regional, and local institutions to redesign education for the 21st century.

In identifying the skills and knowledge that every 21st century student should possess, we consider the environment they occupy in their daily lives, both now and as they look to the future: life, school, and work.

Programs and Services Include:

- The Academy of Digital Arts and Sciences
- Blended Learning Courses
- Connecticut Student Film Festival
- Connecticut Student Innovation Exposition
- Curriculum Development
- Open Source Technology Services
- Perkins Act Consortium/Career & Technical Education
- Professional Development
- Regional Internship Program
- Presentations by Experts in Field



www.educationconnection.org

OCTOBER 2011

Monday	Tuesday	Wednesday	Thursday	Friday
3	4	5 <i>Professional Development - Delayed Opening:</i> •Region 14 (NHS) <i>Conferences - Early Dismissal:</i> •Plymouth (HS)	6 <i>Professional Development:</i> •Bethel •Canaan •Cornwall •Kent •North Canaan •Region 1 •Salisbury •Sharon <i>Conferences - Early Dismissal:</i> •Plymouth (HS) EDUCATION CONNECTION <i>Board of Directors Meeting</i>	7 <i>Professional Development:</i> •Bethel •Canaan •Cornwall •Kent •North Canaan •Region 1 •Salisbury •Sharon •Sherman <i>Early Dismissal:</i> •Newtown - PD •Plymouth (HS) - Conferences •Region 6 - PD •Region 14 - PD •Region 15 - PD
10 <i>COLUMBUS DAY</i> All Schools (except Region 12), Danbury School Offices, & EDUCATION CONNECTION Closed <i>Professional Development:</i> •Region 12	11 <i>Professional Development:</i> •Barkhamsted •Colebrook •Norfolk •Region 7 <i>Professional Development - Early Dismissal:</i> •Danbury	12 <i>Professional Development:</i> •Barkhamsted •Colebrook •Region 7 <i>PD - Delayed Opening:</i> •Region 14 (NHS) <i>Early Dismissal:</i> •ACCESS/GFLC •Bethel (BHS) - Conferences •Litchfield - Teacher Work Day	13 <i>Conferences :</i> •Bethel (BHS)	14 LCSA Luncheon
17	18	19 <i>Professional Development:</i> •New Milford (HS/SMS) - Early Dismissal •Region 14 (NHS) - Delayed Opening <i>Early Dismissal:</i> •Plymouth (Elementary) - Conferences •Region 12 - Conferences •Watertown	20 <i>Conferences - Early Dismissal:</i> •Plymouth (Elementary) •Region 12 •The Gilbert School	21 <i>Conferences - Early Dismissal:</i> •Plymouth (Elementary) •Region 12 WCSA Luncheon
24	25 <i>Professional Development - Early Dismissal:</i> •Danbury <i>Professional Development:</i> •Winchester	26 <i>Professional Development:</i> •New Milford (HS/SMS) - Early Dismissal •Region 14 (NHS) - Delayed Opening <i>Early Dismissal:</i> •ACCESS/GFLC •Bethel (K-3) - Conferences	27 <i>Conferences - Early Dismissal:</i> •Bethel (K-3) <i>Professional Development - Early Dismissal:</i> •Bethel (BHS, BMS, JS)	28 <i>Conferences - Early Dismissal:</i> •Bethel (K-3)
31				

COMMUNITY SERVICES

Community Living Arrangements

Community Living Arrangements provide 24-hour supervision for individuals with developmental disabilities. Residential homes are located in New Fairfield, Torrington, and New Hartford.

Supported Employment Services

Provides a person-centered model of employment supports. These supports may include skill development, needs assessment, community and work exploration, resume and interview supports, job development and placement supports, on-the-job training, and situational assessments.

Supported Living Services

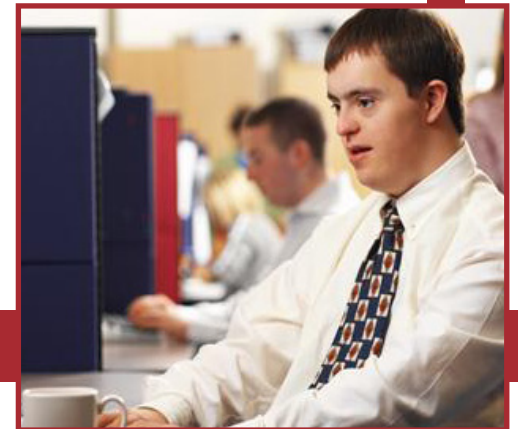
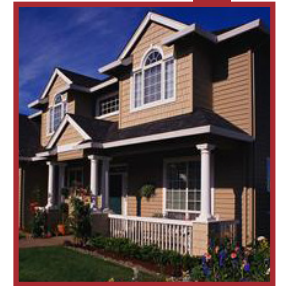
Promotes independence while providing long-lasting personalized supports. We focus on community integration, with the expectation that consumers will have something to offer the community in return.

Title V Older Worker Program

A Senior Community Service Employment Program (SCSEP) for income eligible individuals, age 55 and older. They receive employment training and placement at host non-profit worksites or through on the job experience in the private sector. The goal of the program is to provide short-term support and training in a subsidized environment which will lead to unsubsidized employment either full or part-time.

TRED

Provides free transportation services to eligible Department of Mental Health and Addiction Services consumers in the northwest corner of Connecticut.



NOVEMBER 2011

Monday	Tuesday	Wednesday	Thursday	Friday
	<p>1</p> <p><u>Professional Development:</u></p> <ul style="list-style-type: none"> •ACCESS/GFLC •Danbury •Region 14 •Winchester <p><u>Conferences - Early Dismissal:</u></p> <ul style="list-style-type: none"> •New Milford (SMS) 	<p>2</p> <p><u>Professional Development - Delayed Opening:</u></p> <ul style="list-style-type: none"> •Region 14 (NHS) <p><u>Conferences - Early Dismissal:</u></p> <ul style="list-style-type: none"> •New Milford (SMS) 	<p>3</p> <p><u>Conferences - Early Dismissal:</u></p> <ul style="list-style-type: none"> •New Milford (SMS) <p>EDUCATION CONNECTION Board of Directors Meeting</p>	<p>4</p> <p><u>PD - Early Dismissal:</u></p> <ul style="list-style-type: none"> •Region 15 <p><u>Conferences - Early Dismissal:</u></p> <ul style="list-style-type: none"> •New Milford (SMS)
<p>7</p> <p><u>Conferences - Early Dismissal:</u></p> <ul style="list-style-type: none"> •Danbury (Elem & Middle) •New Milford (SMS) •Plymouth (ETJMS) •Region 7 (MS) •Torrington (Elementary) 	<p>8</p> <p><u>Schools Closed:</u></p> <ul style="list-style-type: none"> •Watertown <p><u>Professional Development:</u></p> <p>Brookfield, New Fairfield, New Milford (SMS), Newtown, Norfolk, Plymouth, Sherman, The Gilbert School, & Torrington</p> <p><u>Conferences - Early Dismissal:</u></p> <ul style="list-style-type: none"> •Danbury (Elem & Middle) •Region 7 (MS) •Region 15 (Elementary) 	<p>9</p> <p><u>PD/Teacher Work Day:</u></p> <ul style="list-style-type: none"> •Litchfield - Early Dismissal •Region 14 (NHS) - Delayed Opening <p><u>Conferences - Early Dismissal:</u></p> <ul style="list-style-type: none"> •Danbury (Elem & Middle) •Plymouth (ETJMS) •Torrington (Elementary) 	<p>10</p> <p><u>Professional Development:</u></p> <ul style="list-style-type: none"> •Bethel <p><u>Conferences - Early Dismissal:</u></p> <ul style="list-style-type: none"> •Danbury (Elem & Middle) •Plymouth (ETJMS) •Region 15 (Elementary) •Torrington (Elementary) 	<p>11</p> <p>VETERAN'S DAY</p> <p>All Schools (except Region 12), Danbury School Offices, & EDUCATION CONNECTION Closed</p> <p><u>Professional Development:</u></p> <ul style="list-style-type: none"> •Region 12
<p>14</p> <p><u>Conferences - Early Dismissal:</u></p> <ul style="list-style-type: none"> •Newtown (Reed & MS) •Region 15 (Elementary) •Thomaston (Black Rock & Center) 	<p>15</p> <p><u>Conferences - Early Dismissal:</u></p> <ul style="list-style-type: none"> •Bethel (JS & BMS) •New Milford (Elem) •Newtown (Elem, Reed, MS, & HS) •Region 14 (WMS) •Region 15 (Middle) •Thomaston (Black Rock & Center) 	<p>16</p> <p><u>PD - Delayed Opening:</u></p> <ul style="list-style-type: none"> •Region 14 (NHS) <p><u>Conferences - Early Dismissal:</u></p> <ul style="list-style-type: none"> •Bethel (JS & BMS) •New Milford (Elem) •Newtown (Elem, Reed, MS, & HS) •Region 14 (WMS) •Thomaston (High) •Winchester 	<p>17</p> <p><u>PD - Early Dismissal:</u></p> <ul style="list-style-type: none"> •Bethel (BHS & BMS) <p><u>Conferences - Early Dismissal:</u></p> <ul style="list-style-type: none"> •Bethel (JS) •New Milford (Elem) •Newtown (Elem, Reed, MS, & HS) •Region 15 (Middle) •Thomaston (High) •Winchester 	<p>18</p> <p><u>Conferences - Early Dismissal:</u></p> <ul style="list-style-type: none"> •New Milford (Elem) •Sherman •Winchester <p><u>Professional Development:</u></p> <ul style="list-style-type: none"> •Thomaston <p>LCSA Luncheon</p>
<p>21</p> <p><u>Conferences - Delayed Opening:</u></p> <ul style="list-style-type: none"> •Sherman <p><u>Conferences - Early Dismissal:</u></p> <ul style="list-style-type: none"> •Barkhamsted •Norfolk 	<p>22</p> <p><u>PD - Early Dismissal:</u></p> <ul style="list-style-type: none"> •Plymouth •Region 6 <p><u>Conferences - Early Dismissal:</u></p> <ul style="list-style-type: none"> •Barkhamsted •Norfolk 	<p>23</p> <p><u>THANKSGIVING RECESS - Closed:</u></p> <p>Barkhamsted, Brookfield, Danbury (& School Offices), Litchfield, New Fairfield, Norfolk, Plymouth, Region 6, Region 7, Region 12, Region 14, & Thomaston</p> <p><u>THANKSGIVING RECESS - Early Dismissal:</u></p> <p>ACCESS/GFLC, Bethel, Colebrook, New Milford, Newtown, Redding, Region 1 (& sending districts), Sherman, The Gilbert School, Torrington, Watertown, & Winchester</p>	<p>24</p> <p><u>THANKSGIVING DAY</u></p> <p>All Schools, Danbury School Offices, & EDUCATION CONNECTION Closed</p>	<p>25</p> <p><u>THANKSGIVING RECESS</u></p> <p>All Schools, Danbury School Offices, & EDUCATION CONNECTION Closed</p>
<p>28</p> <p><u>Conferences - Early Dismissal:</u></p> <ul style="list-style-type: none"> •Region 14 (Elementary) 	<p>29</p> <p><u>Conferences - Early Dismissal:</u></p> <ul style="list-style-type: none"> •Brookfield (5-12) •New Milford (HS) •Region 14 (Elementary) 	<p>30</p> <p><u>PD - Delayed Opening:</u></p> <ul style="list-style-type: none"> •Region 14 (NHS) <p><u>Conferences - Early Dismissal:</u></p> <ul style="list-style-type: none"> •Brookfield (5-12) •Region 14 (Elem) 		

EARLY CHILDHOOD SERVICES

Early Childhood Services offers birth-to-eight programs and services to communities. We plan and develop early childhood initiatives throughout the western Connecticut region utilizing research-based practices in all aspects of early childhood – including care and education, parent involvement, curriculum and assessment, behavior, and social/emotional wellness. We assist communities, school districts, and programs in setting and achieving goals with positive outcomes for children and families.

Our Early Childhood Programs Include:

- Early Intervention
 - Birth-to-Three
 - S.E.E.D. (Services for Early Education and Development)
- Community Planning for Young Children
- Early Childhood Consultation and Training
- Family Resource Centers: Torrington and Plymouth
- Mentor Coach Instructional Approach
- NAEYC Accreditation Facilitation Projects (Northwest and Southwest Regions)
- School Readiness Initiatives
- TLC (Teach, Learn, Communicate) Autism Program
- Western Connecticut State University (WCSU) Child Care Center



Our Collaborations Include:

- Education of Homeless Children and Youth (McKinney-Vento) Program
- Connecticut State Department of Education Training Wheels Initiative
- The Connecticut Community Foundation
- Danbury's Promise for Children Partnership
- Torrington Early Childhood Collaborative



DECEMBER 2011

Monday	Tuesday	Wednesday	Thursday	Friday
			<p>1</p> <p><u>Conferences- Early Dismissal:</u> •Brookfield (5-12) •New Milford (HS) •Region 14 (Elementary)</p> <p>EDUCATION CONNECTION Board of Directors Meeting</p>	<p>2</p> <p><u>Professional Development - Early Dismissal:</u> •Newtown</p> <p><u>Conferences - Early Dismissal:</u> •Brookfield (5-12)</p>
<p>5</p>	<p>6</p> <p><u>Early Dismissal:</u> •Brookfield (K-4) - Conferences •Danbury - Professional Development •New Milford (HS) - Conferences •Watertown</p>	<p>7</p> <p><u>PD - Delayed Opening:</u> •Region 14 (NHS)</p> <p><u>Early Dismissal:</u> •ACCESS/GFLC •Brookfield (K-4) - Conferences</p>	<p>8</p> <p><u>Conferences- Early Dismissal:</u> •Brookfield (K-4) •Colebrook •New Milford (HS)</p>	<p>9</p> <p><u>Conferences- Early Dismissal:</u> •Brookfield (K-4) •Colebrook</p>
<p>12</p>	<p>13</p>	<p>14</p> <p><u>PD - Delayed Opening:</u> •Region 14 (NHS)</p> <p><u>Teacher Work Day - Early Dismissal:</u> •Litchfield</p>	<p>15</p> <p><u>Conferences- Early Dismissal:</u> •Torrington (Middle School)</p>	<p>16</p> <p><u>Conferences- Early Dismissal:</u> •Torrington (Middle School)</p>
<p>19</p>	<p>20</p>	<p>21</p> <p><u>Professional Development - Delayed Opening:</u> •Region 14 (NHS)</p> <p><u>Conferences- Early Dismissal:</u> •Torrington (Middle)</p>	<p>22</p> <p><u>WINTER RECESS - Early Dismissal:</u> •Torrington</p> <p><u>Professional Development - Early Dismissal:</u> •Danbury</p> <p><u>Early Dismissal:</u> •Region 14 •Watertown</p>	<p>23</p> <p><u>WINTER RECESS - Schools Closed:</u> •Region 12 •Region 14 •Torrington</p> <p><u>WINTER RECESS - Early Dismissal:</u> •ACCESS/GFLC •Bethel •Brookfield •Canaan •Colebrook •Cornwall •Danbury •Kent •Litchfield •New Fairfield •New Milford •North Canaan •Region 1 •Region 7 •Salisbury •Sharon •Sherman •The Gilbert School •Thomaston •Winchester</p> <p><u>PD - Early Dismissal:</u> •Region 6</p>
<p>26</p> <p><u>WINTER RECESS:</u> All Schools (except EDUCATION CONNECTION) Closed</p>	<p>27</p> <p><u>WINTER RECESS:</u> All Schools (except EDUCATION CONNECTION) Closed</p>	<p>28</p> <p><u>WINTER RECESS:</u> All Schools (except EDUCATION CONNECTION) Closed</p>	<p>29</p> <p><u>WINTER RECESS:</u> All Schools (except EDUCATION CONNECTION) Closed</p>	<p>30</p> <p><u>WINTER RECESS:</u> All Schools (except EDUCATION CONNECTION) Closed</p>

FOOD SERVICES

The Food Services Department understands that today's student faces many changes, both inside and outside the classroom. A fundamental need of all children and young adults is good nutrition.

Food Services works collaboratively with the Connecticut State Department of Education's Office of Child Nutrition to improve the health and education of children by creating innovative public and private partnerships that promote nutritious food choices. Food Services staff have many years of experience in managing, operating, and implementing food service programs.

We Can Provide Services in the Following Areas:

- On-Site Catering / Off-Site Catering
- Child and Adult Care Food Program (CACFP)
- Farm-to-School
- Healthy Snack Initiative
- Management of National School Lunch Program (NSLP)
- Menu Planning / Development
- Purchasing of Government Commodities
- School Breakfast Program (SBP)
- Summer Food Service Program (SFSP)
- Technical Assistance
- Training Programs



JANUARY 2012

Monday	Tuesday	Wednesday	Thursday	Friday
<p>2</p> <p><u>NEW YEAR/S DAY (OBSERVED)</u> All Schools, Danbury School Offices, & EDUCATION CONNECTION Closed</p>	<p>3</p>	<p>4</p> <p><u>Professional Development - Delayed Opening:</u> •Region 14 (NHS)</p>	<p>5</p>	<p>6</p>
<p>9</p>	<p>10</p>	<p>11</p> <p><u>PD - Delayed Opening:</u> •Region 14 (NHS)</p> <p><u>Teacher Work Day - Early Dismissal:</u> •Litchfield</p> <p><u>Early Dismissal:</u> •ACCESS/GFLC</p>	<p>12</p>	<p>13</p> <p><u>Professional Development:</u> •Bethel</p> <p><u>PD - Early Dismissal:</u> •Newtown •Region 6 •Region 14 •Sherman</p> <p>LCSA Luncheon</p>
<p>16</p> <p><u>MARTIN LUTHER KING DAY</u> All Schools, Danbury School Offices, & EDUCATION CONNECTION Closed</p>	<p>17</p> <p><u>Professional Development - Early Dismissal:</u> •Danbury</p>	<p>18</p> <p><u>Professional Development - Delayed Opening:</u> •Region 14 (NHS)</p>	<p>19</p>	<p>20</p> <p>WCSA Luncheon</p>
<p>23</p> <p><u>Professional Development:</u> •Redding</p>	<p>24</p> <p><u>Exams - Early Dismissal:</u> •Danbury (High)</p>	<p>25</p> <p><u>Professional Development - Delayed Opening:</u> •Region 14 (NHS)</p> <p><u>Early Dismissal:</u> •ACCESS/GFLC</p> <p><u>Exams - Early Dismissal:</u> •Danbury (High)</p>	<p>26</p> <p><u>Exams - Early Dismissal:</u> •Danbury (High)</p>	<p>27</p> <p><u>Professional Development:</u> •Rgion 15</p> <p><u>PD - Early Dismissal:</u> •Winchester</p> <p><u>Exams - Early Dismissal:</u> •Danbury (High)</p> <p><u>Early Dismissal:</u> •The Gilbert School</p>
<p>30</p>	<p>31</p>			

HEAD START AND EARLY HEAD START

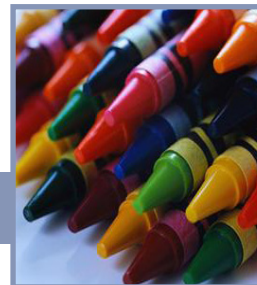
Head Start

Provides an array of quality, comprehensive services, including health, nutrition, parent support, education and mental health, to children ages three to five and their families. Our vision is “each child and family leaves Head Start, healthy, eager to learn, and ready for success.” Program staff work closely with families to ensure that each child has the skills and knowledge necessary to be successful in kindergarten. Our goal is to lay the foundation for children and their families to be life-long learners.

Head Start sites are located in Litchfield, New Milford, Torrington, and Winsted.

Early Head Start

Provides home-based services for expectant families and children ages birth to three, who meet eligibility requirements. Services include weekly home visits which focus on health, nutrition, education, social services, and parent involvement. Playgroups are held each month at the Torrington and Winsted sites.



FEBRUARY 2012

Monday	Tuesday	Wednesday	Thursday	Friday
		<p style="text-align: center; font-size: 2em;">1</p> <p><i>PD - Delayed Opening:</i> •Region 14 (NHS)</p> <p><i>Early Dismissal:</i> •Watertown</p>	<p style="text-align: center; font-size: 2em;">2</p> <p>EDUCATION CONNECTION <i>Board of Directors Meeting</i></p>	<p style="text-align: center; font-size: 2em;">3</p>
<p style="text-align: center; font-size: 2em;">6</p>	<p style="text-align: center; font-size: 2em;">7</p>	<p style="text-align: center; font-size: 2em;">8</p> <p><i>PD - Delayed Opening:</i> •Region 14 (NHS)</p> <p><i>Early Dismissal:</i> •ACCESS/GFLC •Litchfield - <i>Teacher Work Day</i></p>	<p style="text-align: center; font-size: 2em;">9</p>	<p style="text-align: center; font-size: 2em;">10</p>
<p style="text-align: center; font-size: 2em;">13</p>	<p style="text-align: center; font-size: 2em;">14</p> <p><i>Conferences - Early Dismissal:</i> •Winchester</p>	<p style="text-align: center; font-size: 2em;">15</p> <p><i>Professional Development:</i> •New Fairfield •Plymouth - <i>Early Dismissal</i> •Region 14 (NHS) - <i>Delayed Opening</i></p> <p><i>Conferences - Early Dismissal:</i> •Brookfield (9-12) •Winchester</p>	<p style="text-align: center; font-size: 2em;">16</p> <p><i>PRESIDENTS' DAY/WINTER RECESS - Schools Closed:</i> •Plymouth</p> <p><i>Conferences - Early Dismissal:</i> •Winchester</p> <p><i>Professional Development:</i> •Brookfield •Danbury - <i>Early Dismissal</i> •New Fairfield •Sherman - <i>Early Dismissal</i></p>	<p style="text-align: center; font-size: 2em;">17</p> <p><i>PRESIDENTS' DAY/WINTER RECESS - Schools Closed:</i> •Brookfield •Danbury •New Fairfield •New Milford •Norfolk •Plymouth •Region 6 •Region 15 •Sherman •The Gilbert School •Thomaston •Watertown •Winchester</p> <p><i>Professional Development:</i> •ACCESS/GFLC •Bethel •Canaan •Cornwall •Kent •Newtown (<i>Early Dismissal</i>) •North Canaan •Region 1 •Region 14 (<i>Early Dismissal</i>) •Salisbury •Sharon</p>
<p style="text-align: center; font-size: 2em;">20</p> <p>PRESIDENTS' DAY All Schools, Danbury School Offices, & EDUCATION CONNECTION Closed</p>	<p style="text-align: center; font-size: 2em;">21</p> <p><i>PRESIDENTS' DAY/WINTER RECESS - Schools Closed:</i> •ACCESS/GFLC •Barkhamsted •Bethel •Canaan •Colebrook •Cornwall •Kent •Litchfield •Newtown •Norfolk •North Canaan •Redding •Region 1 •Region 14 •Salisbury •Sharon •Thomaston</p> <p><i>Professional Development:</i> •Region 7</p>	<p style="text-align: center; font-size: 2em;">22</p> <p><i>WINTER RECESS - Schools Closed:</i> •ACCESS/GFLC •Newtown •Redding •Sherman</p> <p><i>PD/Teacher Work Day:</i> •Litchfield •Region 14 (NHS) - <i>Delayed Opening</i></p> <p><i>Conferences - Early Dismissal:</i> •Bethel (BHS)</p>	<p style="text-align: center; font-size: 2em;">23</p> <p><i>WINTER RECESS - Schools Closed:</i> •ACCESS/GFLC •Newtown •Redding •Sherman</p>	<p style="text-align: center; font-size: 2em;">24</p> <p><i>WINTER RECESS - Schools Closed:</i> •ACCESS/GFLC •Newtown •Redding •Sherman</p> <p style="text-align: center;"><i>WCSA Luncheon</i></p>
<p style="text-align: center; font-size: 2em;">27</p>	<p style="text-align: center; font-size: 2em;">28</p>	<p style="text-align: center; font-size: 2em;">29</p> <p><i>PD - Delayed Opening:</i> •Region 14 (NHS)</p> <p><i>Early Dismissal:</i> •ACCESS/GFLC</p>		

SCHOOL AGE PROGRAMS

Our School Age Programs provide a state-licensed twelve-month program for children of elementary and middle school age. On-site before and after school programs, as well as full-day Summer Adventure Programs, offer a variety of enriching and quality experiences. Customized on-site professional development and technical assistance is offered for school districts and organizations. Our programs are conveniently located in school buildings; no transportation is required. Parents have peace of mind knowing their child receives quality, affordable care. These programs are funded by parent fees and require no additional funding from school districts.

Scheduled activities include: enrichment programs, a STEM and literacy component, arts and crafts, sports, games, the use of computers, quiet time, and help with homework. Students have some choice in planning and implementing activities in which they want to participate. Nutritious snacks are provided.

We Offer:

- On-site before and/or after school programs for students.
- Full day summer programs for students. Our Summer Adventure Programs are offered in Barkhamsted, Newtown, and Torrington. Each week is devoted to a different theme that is created and implemented by the students. Some of the activities consist of arts & crafts, science, indoor/outdoor sports, multicultural activities, swimming, and field trips/fun days.
- Customized professional development opportunities in your district/agency.
- Consulting and technical assistance provided to other programs.
- Enrichment courses for elementary and middle school students.



We Can Help Your School District:

- Design, implement, and evaluate local before and after school programs.
- Prepare a comprehensive needs assessment for your before and after school needs.



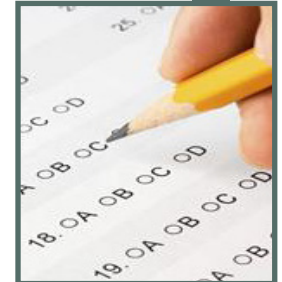
MARCH 2012

Monday	Tuesday	Wednesday	Thursday	Friday
			1 EDUCATION CONNECTION Board of Directors Meeting	2
5 CMT and CAPT Testing	6 CMT and CAPT Testing <u>Conferences - Early Dismissal:</u> •Barkhamsted	7 CMT and CAPT Testing <u>Teacher Work Day - Early Dismissal:</u> •Litchfield <u>Conferences - Early Dismissal:</u> •Barkhamsted	8 CMT and CAPT Testing <u>Conferences - Early Dismissal:</u> •Barkhamsted	9 CMT and CAPT Testing <u>Professional Development:</u> •Region 6 •The Gilbert School •Winchester LCSA Luncheon
12 CMT and CAPT Testing	13 CMT and CAPT Testing	14 CMT and CAPT Testing <u>Early Dismissal:</u> •ACCESS/GFLC •Brookfield (5-8) - Conferences	15 CMT and CAPT Testing <u>Conferences- Early Dismissal:</u> •Brookfield (5-8) •Colebrook	16 CMT and CAPT Testing <u>Conferences- Early Dismissal:</u> •Colebrook WCSA Luncheon
19 CMT and CAPT Testing <u>Professional Development:</u> •Region 14 <u>Conferences - Early Dismissal:</u> •Norfolk	20 CMT and CAPT Testing <u>Conferences - Early Dismissal:</u> •Norfolk	21 CMT and CAPT Testing <u>Early Dismissal:</u> •Plymouth (Elem) - Conferences •The Gilbert School •Torrington (Middle) - Conferences •Winchester - Professional Development <u>PD - Delayed Opening:</u> •Region 14 (NHS)	22 CMT and CAPT Testing <u>Conferences- Early Dismissal:</u> •Brookfield (K-4) •Plymouth (Elementary) •Torrington (Middle) <u>PD/Conferences:</u> •ACCESS/GFLC	23 CMT and CAPT Testing <u>Early Dismissal:</u> •Brookfield (K-4) - Conferences •Plymouth (Elementary) - Conferences •Sherman - Professional Development •Torrington (Middle) - Conferences <u>Professional Development:</u> •ACCESS/GFLC
26 CMT and CAPT Testing	27 CMT and CAPT Testing <u>PD - Early Dismissal:</u> •Danbury <u>Conferences - Early Dismissal:</u> •New Milford (Elementary) •Newtown (Elementary & Reed)	28 CMT and CAPT Testing <u>PD - Delayed Opening:</u> •Region 14 (NHS) <u>Early Dismissal:</u> •ACCESS/GFLC •Bethel (K-3) - Conferences •New Milford (Elem) - Conferences •Newtown (Elem & Reed) - Conferences •Torrington (High) - Conferences	29 CMT and CAPT Testing <u>Early Dismissal:</u> •Bethel (K-3) - Conferences •Bethel (BHS, BMS & JS) - PD •New Milford (Elem) - Conferences •Newtown (Elem, Reed, MS, & HS) - Conferences •Torrington (High) - Conferences •Watertown	30 CMT and CAPT Testing <u>Professional Development:</u> •Watertown <u>Early Dismissal:</u> •Bethel (K-3) - Conferences •New Milford (Elem) - Conferences •Region 15 - Professional Development

SCHOOL SERVICES

EDUCATION CONNECTION's professional development staff have been key partners in working with schools to increase student achievement. Our School Services Team offers training, facilitation, and support in:

- Action Research
- Administrative Evaluation & Support
- Authentic Assessment Strategies
- CAPT/CMT Strategies for Success
- Common Core State Standards
- Common Formative Assessments
- Conducting Classroom WalkThroughs
- Crisis Response Plan Development
- Curriculum Development & Improvement
- Customized Training and Interventions
- Data-Driven Decision Making
- Data Team Design and Support
- Differentiated Instruction
- Diversity/Cultural Competence Training
- Effective Teaching Strategies
- Holistic Scoring/Calibration - for CMT/ CAPT
- Identification, instruction, and assessment of 21st century skills
- Looking at Student Work Protocols
- National Standards Alignment
- NEASC accreditation preparation and support
- Online Learning
- Pre-K to 12 Literacy Strategies
- Professional Learning Communities
- Project & Problem Based Learning
- School Improvement Planning
- Scientific Research Based Interventions (SRBI) - CT's Framework for RTI
- Science, Technology, Engineering, & Mathematics (STEM) Initiatives
- Strategic and Technology Planning
- Teacher & Student Portfolios
- TEAM (Teacher Education & Mentoring)
- Teacher Evaluation Processes



Other Programs and Services Include:

- Bring Your Own Device (BYOD) Planning and One-to-One Implementation Support
- Brookfield Summer School
- CT Career Choices Initiative
- Evaluation, Assessment, & Planning/ Survey Administration
- Fingerprinting
- Instructional Technology
- Interdistrict Grants
- Personnel Services



APRIL 2012

Monday	Tuesday	Wednesday	Thursday	Friday
<p>2</p>	<p>3</p> <p><u>Conferences - Early Dismissal:</u> •Torrington (Elementary)</p>	<p>4</p> <p><u>Professional Development - Delayed Opening:</u> •Region 14 (NHS)</p> <p><u>Conferences - Early Dismissal:</u> •New Milford (HS) •Torrington (Elementary)</p>	<p>5</p> <p><u>Early Dismissal:</u> •Newtown - PD •Sherman - PD •The Gilbert School •Torrington (Elem) - Conferences •Winchester</p> <p>EDUCATION CONNECTION <i>Board of Directors Meeting</i></p>	<p>6</p> <p><u>GOOD FRIDAY</u> All Schools, Danbury School Offices, & EDUCATION CONNECTION Closed</p>
<p>9</p> <p><u>SPRING RECESS - Schools Closed:</u> •Canaan •Cornwall •Kent •Litchfield •North Canaan •Region 1 •Region 12 •Salisbury •Sharon •The Gilbert School •Torrington •Winchester</p>	<p>10</p> <p><u>SPRING RECESS - Schools Closed:</u> •Canaan •Cornwall •Kent •Litchfield •North Canaan •Region 1 •Region 12 •Salisbury •Sharon •The Gilbert School •Torrington •Winchester</p> <p><u>Conferences - Early Dismissal:</u> •Bethel (JS & BMS)</p>	<p>11</p> <p><u>PD - Delayed Opening:</u> •Region 14 (NHS)</p> <p><u>SPRING RECESS - Schools Closed:</u> •Canaan •Cornwall •Kent •Litchfield •North Canaan •Region 1 •Region 12 •Salisbury •Sharon •The Gilbert School •Torrington •Winchester</p> <p><u>Early Dismissal:</u> •ACCESS/GFLC •Bethel (JS & BMS) - Conferences</p>	<p>12</p> <p><u>SPRING RECESS - Schools Closed:</u> •Canaan •Cornwall •Kent •Litchfield •North Canaan •Region 1 •Region 12 •Salisbury •Sharon •The Gilbert School •Torrington •Winchester</p> <p><u>Early Dismissal:</u> •Bethel (JS) - Conferences •Bethel (BMS) - Professional Development</p>	<p>13</p> <p><u>SPRING RECESS - Schools Closed:</u> •Canaan •Cornwall •Kent •Litchfield •North Canaan •Region 1 •Region 12 •Salisbury •Sharon •The Gilbert School •Torrington •Winchester</p> <p><u>PD - Early Dismissal:</u> •Danbury •Region 6 •Region 14</p> <p><i>LCSA Luncheon</i></p>
<p>16</p> <p><u>SPRING RECESS - Schools Closed:</u> All Schools (except Litchfield, Region 1 & sending schools, Region 12, The Gilbert School, Torrington, Winchester, & EDUCATION CONNECTION) Closed</p>	<p>17</p> <p><u>SPRING RECESS - Schools Closed:</u> All Schools (except Litchfield, Region 1 & sending schools, Region 12, The Gilbert School, Torrington, Winchester, & EDUCATION CONNECTION) Closed</p>	<p>18</p> <p><u>SPRING RECESS - Schools Closed:</u> All Schools (except Litchfield, Region 1 & sending schools, Region 12, The Gilbert School, Torrington, Winchester, & EDUCATION CONNECTION) Closed</p>	<p>19</p> <p><u>SPRING RECESS - Schools Closed:</u> All Schools (except Litchfield, Region 1 & sending schools, Region 12, The Gilbert School, Torrington, Winchester, & EDUCATION CONNECTION) Closed</p> <p><u>Early Dismissal:</u> •The Gilbert School •Winchester - Professional Development</p>	<p>20</p> <p><u>SPRING RECESS - Schools Closed:</u> All Schools (except Litchfield, Region 1 & sending schools, Region 12, The Gilbert School, Torrington, Winchester, & EDUCATION CONNECTION) Closed</p>
<p>23</p> <p><u>Professional Development:</u> •Barkhamsted •Colebrook •Norfolk</p>	<p>24</p>	<p>25</p> <p><u>Professional Development - Delayed Opening:</u> •Region 14 (NHS)</p>	<p>26</p>	<p>27</p> <p><i>WCSA Luncheon</i></p>
<p>30</p>				

SPECIAL EDUCATION AND RELATED SERVICES

Educational programming in several different alternative formats is available for elementary age children, medically fragile and profoundly challenged students, and middle and high school students with severe behaviors.

ACCESS Program

These programs are designed to meet the needs of students in grades 7-12 with emotional and behavioral challenges who have difficulty within their home school. Counseling services are provided within small program and individual settings.

Autism Services

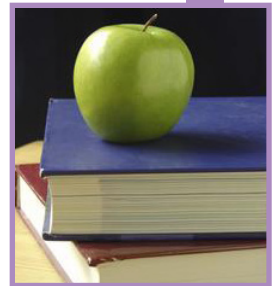
A variety of services and supports are offered to students, families and districts including: Family Centered Services; Multi Disciplinary Evaluation/Assessment; Consultation for Services in Inclusive Settings; District Staff Training and Coaching; Extended School Year services and Play Social Skills; and Early Childhood Program.

Gertrude Fielding Learning Center (GFLC)

These programs are designed to meet the needs of students in grades 3-6 with emotional and behavioral challenges who have difficulty within their home school. Counseling services are provided within small program and individual settings.

Personnel Services

Provides a variety of professional and related services staff to assist school districts with their students and programs. These staff include: school nurses; teachers; supported employment specialists; therapists (speech, occupational and physical); psychologists; child care workers; personal care attendants; adult education administrators; and interim educational administrators (special education directors and supervisors).



MAY 2012

Monday	Tuesday	Wednesday	Thursday	Friday
	1	2 <i>PD - Delayed Opening:</i> •Region 14 (NHS) <i>PD - Early Dismissal:</i> •New Milford (HS/SMS) <i>Early Dismissal:</i> •ACCESS/GFLC	3 EDUCATION CONNECTION <i>Board of Directors Meeting</i>	4
7	8	9 <i>PD - Delayed Opening:</i> •Region 14 (NHS) <i>PD/ Work Day - Early Dismissal:</i> •Litchfield •New Milford (Elementary)	10	11 <i>Professional Development -</i> <i>Early Dismissal:</i> •Region 6 <i>LCSA Luncheon</i>
14	15 <i>Professional Development -</i> <i>Delayed Opening:</i> •Bethel (BHS)	16 <i>PD - Delayed Opening:</i> •Region 14 (NHS) <i>PD - Early Dismissal:</i> •New Milford (HS/SMS) <i>Early Dismissal:</i> •ACCESS/GFLC •Watertown	17	18 <i>WCSA Luncheon</i>
21	22 <i>Professional Development -</i> <i>Early Dismissal:</i> •Danbury <i>Early Dismissal:</i> •Region 15 (Elementary)	23 <i>Early Dismissal:</i> •The Gilbert School <i>PD - Delayed Opening:</i> •Region 14 (NHS) <i>PD - Early Dismissal:</i> •Winchester	24 <i>Early Dismissal:</i> •Region 15 (Elementary)	25 <i>Professional Development:</i> •Danbury <i>PD - Early Dismissal:</i> •Newtown •Region 14 <i>Early Dismissal:</i> •Region 7
28 <i>MEMORIAL DAY</i> All Schools, Danbury School Offices, & EDUCATION CONNECTION Closed	29	30 <i>Professional Development -</i> <i>Delayed Opening:</i> •Region 14 (NHS)	31	

TRANSPORTATION SERVICES

Our Transportation Services Department specializes in transporting special needs students. We have a fleet of 81 vehicles that we use for transportation (including two school buses, five wheelchair vehicles, and 66 Student Transportation Vehicles). We presently transport to 50 schools and programs within Connecticut. We provide safe, reliable and cost effective transportation. We can provide significant cost reductions by combining runs with cooperating districts. We have two dispatch locations: one in Litchfield and one in Danbury.

We transport students for:

- School Districts
- Area Hospital Programs
- Head Start Programs
- Connecticut Rehabilitation Services
- Copes Program in Danbury
- Foothills Adult & Continuing Education Classes

We can fill your transportation needs on a one-time or on-going basis. Call today and reap the rewards of cross-district transportation. Have your students join the over 300 students we currently serve.



June 2012

Monday	Tuesday	Wednesday	Thursday	Friday
				1 <i>Professional Development - Early Dismissal:</i> •Region 15
4 <i>Teacher Work Day:</i> •Region 15	5 <i>Last Day of School:</i> •Plymouth	6 <i>Exams - Early Dismissal:</i> •Danbury (High) <i>Early Dismissal:</i> •ACCESS/GFLC	7 <i>Exams - Early Dismissal:</i> •Danbury (High) <i>Last Day of School:</i> •New Milford •Region 15 EDUCATION CONNECTION <i>Board of Directors Meeting</i>	8 <i>Last Day of School:</i> •Canaan •Kent •Region 1 •Sharon •Cornwall •North Canaan •Salisbury •Watertown <i>Exams - Early Dismissal:</i> •Danbury (High) <i>Early Dismissal:</i> •Norfolk <i>Last Day for Teachers:</i> •Region 15 LCSA Luncheon
11 <i>Exams - Early Dismissal:</i> •Danbury (High) <i>Last Day of School:</i> •Norfolk •Region 7 •Thomaston •Region 6 •The Gilbert School •Winchester	12 <i>Early Dismissal:</i> •Barkhamsted <i>Last Day of School:</i> •Brookfield •Litchfield •Region 14 •Colebrook •Redding <i>Last Day for Teachers:</i> •The Gilbert School •Winchester	13 <i>Last Day of School:</i> •Barkhamsted •Danbury •Region 12 •Bethel •Newtown <i>Last Day for Teachers:</i> •Region 14	14 <i>Last Day of School:</i> •Sherman •Torrington <i>Last Day for Teachers:</i> •Danbury	15 <i>Last Day for Teachers:</i> •Torrington WCSA Luncheon
18 <i>Last Day of School:</i> •ACCESS/GFLC	19 <i>Professional Development:</i> •ACCESS/GFLC	20	21 <i>Last Day of School:</i> •New Fairfield	22 <i>Last Day for Teachers:</i> •New Fairfield
25	26	27	28	29



Litchfield Campus

355 Goshen Road • P.O. Box 909
Litchfield, CT 06759-0909
Phone: (860) 567-0863
Fax: (860) 567-3381



Danbury Campus

345 Main Street
Danbury, CT 06810
Phone: (203) 791-1904
Fax: (203) 778-8076

Member Districts

Barkhamsted

Bethel

Brookfield

Canaan

Colebrook

Cornwall

Danbury

Kent

Litchfield

New Fairfield

New Milford

Newtown

Norfolk

North Canaan

Plymouth

Redding

Region 1

Region 6

Region 7

Region 12

Region 14

Region 15

Salisbury

Sharon

Sherman

The Gilbert School

Thomaston

Torrington

Watertown

Winchester

Region 1

Canaan

Cornwall

Kent

North Canaan

Salisbury

Sharon

Region 6

Goshen

Morris

Warren

Region 7

Barkhamsted

Colebrook

New Hartford

Norfolk

Region 12

Bridgewater

Roxbury

Washington

Region 14

Bethlehem

Woodbury

Region 15

Middlebury

Southbury

EDUCATION CONNECTION

Social Networking



find us on facebook at www.facebook.com/EDUCATIONCONNECTIONet

follow us on twitter at twitter.com/EDCONNET

